

CCL3L1 antibody

Cat. No. GTX48812

Host	Rabbit
Clonality	Polyclonal
Isotype	IgG
Applications	WB, ELISA
Reactivity	Bovine, Pig

Package
50 µg

Applications

Application Note

*Optimal dilutions/concentrations should be determined by the researcher.

Suggested dilution	Recommended dilution
WB	1 µg/mL
ELISA	Assay dependent

Not tested in other applications.

Properties

Form	Liquid
Buffer	20mM Potassium Phosphate, 150mM NaCl
Preservative	0.01% Sodium azide
Storage	Store as concentrated solution. Centrifuge briefly prior to opening vial. For short-term storage (1-2 weeks), store at 4°C. For long-term storage, aliquot and store at -20°C or below. Avoid multiple freeze-thaw cycles.
Concentration	1 mg/ml (Please refer to the vial label for the specific concentration.)
Immunogen	Recombinant protein raised in yeast, corresponding to the 70 amino acids of the mature swine CCL3L1 protein.
Purification	Protein A purified From serum
Conjugation	Unconjugated

Note

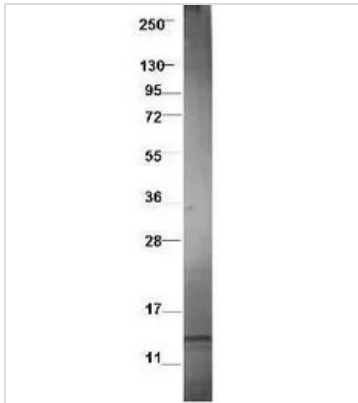
For laboratory research use only. Not for any clinical, therapeutic, or diagnostic use in humans or animals. Not for animal or human consumption.

Purchasers shall not, and agree not to enable third parties to, analyze, copy, reverse engineer or otherwise attempt to determine the structure or sequence of the product.



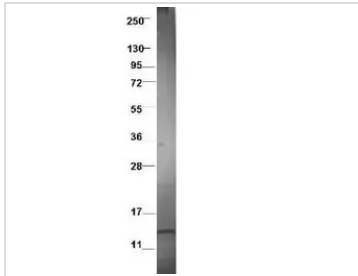
For full product information, images and publications, please visit our [website](#).

DATA IMAGES



GTX48812 WB Image

Western blot using GeneTex's protein-A purified anti-pig CCL3L1 antibody shows detection of recombinant pig CCL3L1 at 7.8kDa raised in yeast. Protein was purified and resolved by SDS-PAGE, transferred to PVDF membrane. Membrane was blocked with 3% BSA, and probed with GeneTex's anti-pig CCL3L1 antibody. After washing, membrane was probed with Dylight 649 Conjugated Anti-Rabbit IgG (H&L) (Donkey) Antibody.



GTX48812 WB Image

WB analysis of recombinant pig CCL3L1 protein using GTX48812 CCL3L1 antibody.



For full product information, images and publications, please visit our [website](#).