

MCP1 / CCL2 antibody

Cat. No. GTX48813

Host	Rabbit
Clonality	Polyclonal
Isotype	IgG
Applications	WB, ELISA
Reactivity	Mouse, Bovine

References (2)

Package

50 µg

Applications

Application Note

*Optimal dilutions/concentrations should be determined by the researcher.

Suggested dilution	Recommended dilution
WB	1 µg/mL
ELISA	1:4500

Not tested in other applications.

Calculated MW 11 kDa. ([Note](#))

Properties

Form	Liquid
Buffer	20mM Potassium Phosphate, 150mM NaCl
Preservative	0.01% Sodium azide
Storage	Store as concentrated solution. Centrifuge briefly prior to opening vial. For short-term storage (1-2 weeks), store at 4°C. For long-term storage, aliquot and store at -20°C or below. Avoid multiple freeze-thaw cycles.
Concentration	1 mg/ml (Please refer to the vial label for the specific concentration.)
Immunogen	Recombinant protein raised in yeast, corresponding to the 76 amino acids of the mature bovine CCL2 protein.
Purification	Protein A purified From serum
Conjugation	Unconjugated

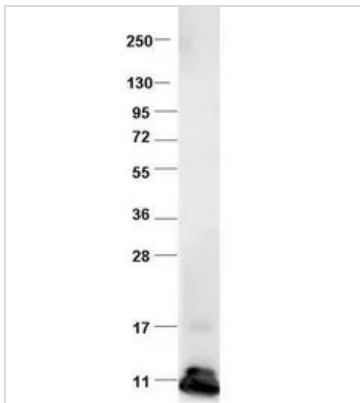
Note

For laboratory research use only. Not for any clinical, therapeutic, or diagnostic use in humans or animals. Not for animal or human consumption.

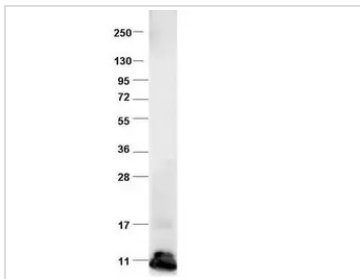
Purchasers shall not, and agree not to enable third parties to, analyze, copy, reverse engineer or otherwise attempt to determine the structure or sequence of the product.



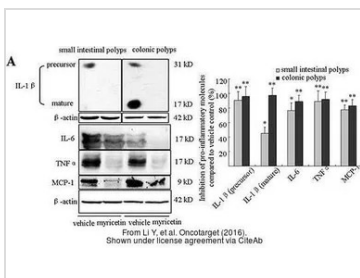
For full product information, images and publications, please visit our [website](#).

DATA IMAGES

GTx48813 WB Image

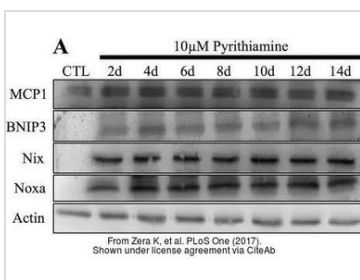
Western blot using GeneTex's protein-A purified anti-bovine CCL2 antibody shows detection of recombinant bovine CCL2 at 8.8kDa raised in yeast. Protein was purified and resolved by SDS-PAGE, then transferred to PVDF membrane. Membrane was blocked with 3% BSA , and probed with GeneTex's anti-bovine CCL2 antibody . After washing, membrane was probed with Dylight 649 Conjugated Anti-Rabbit IgG (H&L) (Donkey) Antibody.


GTx48813 WB Image

WB analysis of recombinant bovine CCL2 protein using GTx48813 MCP1 / CCL2 antibody.


GTx48813 WB Image

The data was published in the journal Oncotarget in 2016. [PMID: 27507058](https://pubmed.ncbi.nlm.nih.gov/27507058/)


GTx48813 WB Image

The data was published in the journal PLoS One in 2017. [PMID: 29045486](https://pubmed.ncbi.nlm.nih.gov/29045486/)



For full product information, images and publications, please visit our [website](https://www.genetex.com).