

Tmbim1 antibody

Cat. No. GTX48815

Host	Rabbit
Clonality	Polyclonal
Isotype	IgG
Application	WB, IHC-P, ELISA
Reactivity	Human

Package

50 µg

APPLICATION

Application Note

*Optimal dilutions/concentrations should be determined by the researcher.

Suggested dilution	Recommended dilution
WB	1:500-1:2000
IHC-P	10 µg/mL
ELISA	1:10000

Not tested in other applications.

Calculated MW 35 kDa. ([Note](#))

PROPERTIES

Form	Liquid
Buffer	20mM Potassium Phosphate, 150mM NaCl
Preservative	0.01% Sodium azide
Storage	Store as concentrated solution. Centrifuge briefly prior to opening vial. For short-term storage (1-2 weeks), store at 4°C. For long-term storage, aliquot and store at -20°C or below. Avoid multiple freeze-thaw cycles.
Concentration	1.2 mg/ml (Please refer to the vial label for the specific concentration.)
Immunogen	Recombinant protein corresponding to the amino terminus of human TMBIM1 protein.
Purification	Protein A purified From serum
Conjugation	Unconjugated

Note

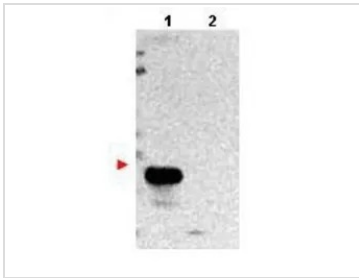
For laboratory research use only. Not for any clinical, therapeutic, or diagnostic use in humans or animals. Not for animal or human consumption.

Purchasers shall not, and agree not to enable third parties to, analyze, copy, reverse engineer or otherwise attempt to determine the structure or sequence of the product.



For full product information, images and publications, please visit our [website](#).

DATA IMAGES



GTX48815 WB Image

Western blot using GeneTex protein A purified anti-TMBIM1 antibody (GTX48815) shows detection of exogenous TMBIM1 in lysates from HeLa cells transfected with pcDNA3-hTMBIM1 (lane 1). No staining is observed in lysates from mock transformed HeLa cells (lane 2). To date this antibody has shown the ability to recognize overexpressed TMBIM1 but not endogenous protein. The membrane was probed with the primary antibody at a 1:1,000 dilution at 4° C, overnight.



For full product information, images and publications, please visit our [website](#).