

## Ulp1 antibody

**Cat. No. GTX48820**

<b>Host</b>	Rabbit
<b>Clonality</b>	Polyclonal
<b>Isotype</b>	IgG
<b>Applications</b>	WB, ICC/IF, ELISA
<b>Reactivity</b>	Yeast

**Package**  
100 µg

## Applications

**Application Note**

\*Optimal dilutions/concentrations should be determined by the researcher.

Suggested dilution	Recommended dilution
WB	1:500-1:2000
ICC/IF	Assay dependent
ELISA	1:4000-1:20000

Not tested in other applications.

**Calculated MW** 72 kDa. ([Note](#))

## Properties

<b>Form</b>	Liquid
<b>Buffer</b>	20mM Potassium Phosphate, 150mM NaCl
<b>Preservative</b>	0.01% Sodium azide
<b>Storage</b>	Store as concentrated solution. Centrifuge briefly prior to opening vial. For short-term storage (1-2 weeks), store at 4°C. For long-term storage, aliquot and store at -20°C or below. Avoid multiple freeze-thaw cycles.
<b>Concentration</b>	5 mg/ml (Please refer to the vial label for the specific concentration.)
<b>Immunogen</b>	Recombinant yeast ULP-1 protein.
<b>Purification</b>	IgG fraction This product is an IgG fraction antibody purified from monospecific antiserum by a multi-step process which includes delipidation, salt fractionation and ion exchange chromatography followed by extensive dialysis against the buffer stated above.
<b>Conjugation</b>	Unconjugated

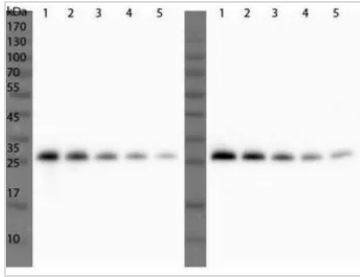


For full product information, images and publications, please visit our [website](#).

For laboratory research use only. Not for any clinical, therapeutic, or diagnostic use in humans or animals. Not for animal or human consumption.

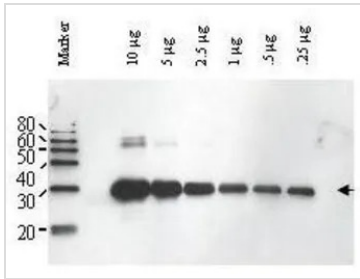
**Note**  
Purchasers shall not, and agree not to enable third parties to, analyze, copy, reverse engineer or otherwise attempt to determine the structure or sequence of the product.

DATA IMAGES



**GTX48820 WB Image**

Western Blot of Rabbit Anti-ULP1 Antibody. (in duplicate) Lane 1: 50ng ULP1CD. Lane 2: 25ng ULP1CD. Lane 3: 12.5ng ULP1CD. Lane 4: 6.25ng ULP1CD. Lane 5: 3.13ng ULP1CD. Primary Antibody: Anti-ULP1 at 1:1,000 dilution O/N at 4°C. Secondary Antibody: Goat Anti-Rabbit HRP 1:5,000 RT for 30 min.



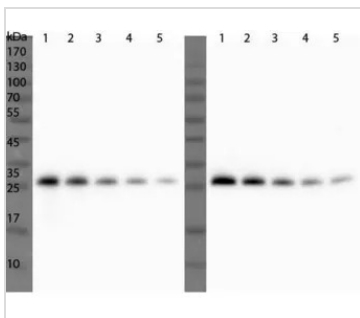
**GTX48820 WB Image**

Western blot using GeneTex's Affinity Purified anti-Yeast ULP-1 antibody shows detection of a truncated ULP-1 fusion protein (arrowhead). Increasing concentrations of yeast ULP-1 were run on a SDS-PAGE, transferred onto nitrocellulose, and blocked for 1 hour with 5% non-fat dry milk in TBST, and probed overnight at 4°C with a 1:1000 dilution of anti-yULP-1 antibody in 5% non-fat dry milk in TBST. Detection occurred using a 1:1,000 dilution of HRP-labeled Donkey anti-Rabbit IgG for 1 hour at room temperature.



**GTX48820 WB Image**

Western blot using GeneTex's Affinity Purified anti-Yeast ULP-1 antibody was used to confirm the specificity of the antibody. SDS-PAGE of 2 µg of ULP-1 homologues from other sources (lanes 2 through 9). After blocking for 1 hour with 5% non-fat dry milk in TBST, the blot was probed overnight at 4°C with a 1:1,000 dilution of anti-yULP1 antibody detected as above. This antibody is specific for yeast ULP1 and does not react with ULP1 from related sources including human SENP.



**GTX48820 WB Image**

WB analysis of recombinant yeast Ulp1 protein using GTX48820 Ulp1 antibody.  
Lane 1 : 50 ng  
Lane 2 : 25 ng  
Lane 3 : 12.5 ng  
Lane 4 : 6.25 ng  
Lane 5 : 3.13 ng  
Dilution : 1:1000



For full product information, images and publications, please visit our [website](#).