

Sumo antibody

Cat. No. GTX48821

Host	Rabbit
Clonality	Polyclonal
Isotype	IgG
Applications	WB, ELISA
Reactivity	Human

Package
100 µg

Applications

Application Note

*Optimal dilutions/concentrations should be determined by the researcher.

Suggested dilution	Recommended dilution
WB	1:500-1:3000
ELISA	1:5000-1:25000

Not tested in other applications.

Calculated MW 12 kDa. ([Note](#))

Properties

Form	Liquid
Buffer	20mM Potassium Phosphate, 150mM NaCl
Preservative	0.01% Sodium azide
Storage	Store as concentrated solution. Centrifuge briefly prior to opening vial. For short-term storage (1-2 weeks), store at 4°C. For long-term storage, aliquot and store at -20°C or below. Avoid multiple freeze-thaw cycles.
Concentration	5 mg/ml (Please refer to the vial label for the specific concentration.)
Immunogen	Recombinant human SUMO protein.
Purification	IgG fraction This product is an IgG fraction antibody purified from monospecific antiserum by a multi-step process which includes delipidation, salt fractionation and ion exchange chromatography followed by extensive dialysis against the buffer stated above.
Conjugation	Unconjugated

Note

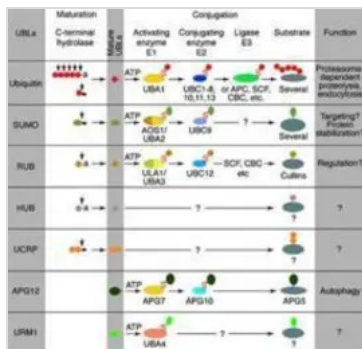
For laboratory research use only. Not for any clinical, therapeutic, or diagnostic use in humans or animals. Not for animal or human consumption.

Purchasers shall not, and agree not to enable third parties to, analyze, copy, reverse engineer or otherwise attempt to determine the structure or sequence of the product.

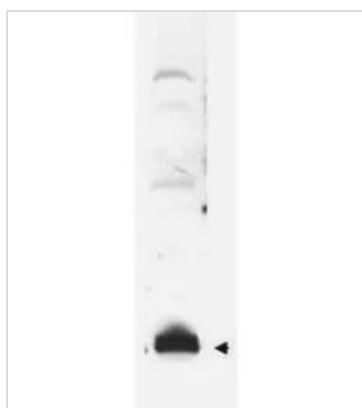


For full product information, images and publications, please visit our [website](#).

DATA IMAGES



GTX48821 Image



GTX48821 WB Image

Western blot of hSUMO fusion protein. Anti-SUMO antibody, generated by immunization with recombinant human SUMO, was tested by western blot against a SUMO-GFP fusion protein after cleavage by proteases. Dilution of the antibody between 1:1,000 and 1:5,000 showed strong reactivity specifically with the SUMO portion of the fusion protein (arrowhead). In this blot the antibody was used at a 1:2000 dilution incubated overnight at 4° C in 5% non-fat dry milk in TBST. Detection occurred using a 1:2000 dilution of HRP-labeled Donkey anti-Rabbit IgG



For full product information, images and publications, please visit our [website](https://www.genetex.com).