

## Rub1 antibody

**Cat. No. GTX48823**

<b>Host</b>	Rabbit
<b>Clonality</b>	Polyclonal
<b>Isotype</b>	IgG
<b>Applications</b>	WB, ELISA
<b>Reactivity</b>	Yeast

**Package**  
100 µg

## Applications

**Application Note**

\*Optimal dilutions/concentrations should be determined by the researcher.

Suggested dilution	Recommended dilution
WB	1:500-1:2000
ELISA	1:1000-1:5000

Not tested in other applications.

**Calculated MW** 9 kDa. ([Note](#))

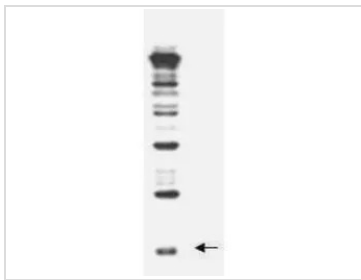
## Properties

<b>Form</b>	Liquid
<b>Buffer</b>	20mM Potassium Phosphate, 150mM NaCl
<b>Preservative</b>	0.01% Sodium azide
<b>Storage</b>	Store as concentrated solution. Centrifuge briefly prior to opening vial. For short-term storage (1-2 weeks), store at 4°C. For long-term storage, aliquot and store at -20°C or below. Avoid multiple freeze-thaw cycles.
<b>Concentration</b>	1 mg/ml (Please refer to the vial label for the specific concentration.)
<b>Immunogen</b>	Full length recombinant yeast Rub1 protein.
<b>Purification</b>	IgG fraction This product is an IgG fraction antibody purified from monospecific antiserum by a multi-step process which includes delipidation, salt fractionation and ion exchange chromatography followed by extensive dialysis against the buffer stated above.
<b>Conjugation</b>	Unconjugated
<b>Note</b>	For laboratory research use only. Not for any clinical, therapeutic, or diagnostic use in humans or animals. Not for animal or human consumption.  Purchasers shall not, and agree not to enable third parties to, analyze, copy, reverse engineer or otherwise attempt to determine the structure or sequence of the product.

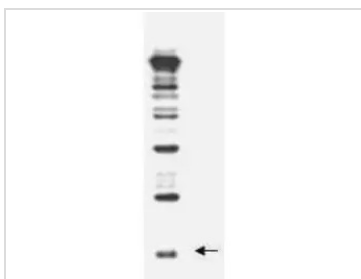


For full product information, images and publications, please visit our [website](#).

## DATA IMAGES

**GTX48823 WB Image**

Anti-Rub1 antibody, generated by immunization with full-length, recombinant yeast Rub1, was tested by western blot against a yeast cell lysate. A dilution of the antibody between 1:200 and 1:1,000 will show strong reactivity specifically with free Rub1 protein (indicated by arrow) and Rub1 conjugates. In this blot, the antibody was used at a 1:500 dilution and was incubated overnight at 4° C in 5% non-fat dry milk in TBST. Detection occurred using a 1:2000 dilution of HRP-labeled Donkey anti-Rabbit IgG

**GTX48823 WB Image**

WB analysis of recombinant yeast Rub1 protein using GTX48823 Rub1 antibody.  
Dilution : 1:500



For full product information, images and publications, please visit our [website](#).