

Sumo antibody [4F2.F5.G2]

Cat. No. GTX48824

Host	Mouse
Clonality	Monoclonal
Isotype	IgG1
Applications	WB, ELISA, Functional Assay, IHC
Reactivity	Yeast

Package
50 µg

Applications

Application Note

*Optimal dilutions/concentrations should be determined by the researcher.

Suggested dilution	Recommended dilution
WB	1:500-1:2000
ELISA	1:20000
Functional Assay	Assay dependent
IHC	1:1000

Not tested in other applications.

Calculated MW 12 kDa. ([Note](#))

Properties

Form	Liquid
Buffer	20mM Potassium Phosphate, 150mM NaCl
Preservative	0.01% Sodium azide
Storage	Store as concentrated solution. Centrifuge briefly prior to opening vial. For short-term storage (1-2 weeks), store at 4°C. For long-term storage, aliquot and store at -20°C or below. Avoid multiple freeze-thaw cycles.
Concentration	1.9 mg/ml (Please refer to the vial label for the specific concentration.)
Immunogen	Full-length recombinant yeast SUMO protein.
Purification	Protein A purified From tissue culture supernatant
Conjugation	Unconjugated



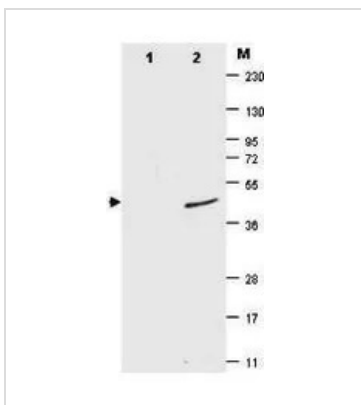
For full product information, images and publications, please visit our [website](#).

For laboratory research use only. Not for any clinical, therapeutic, or diagnostic use in humans or animals. Not for animal or human consumption.

Note

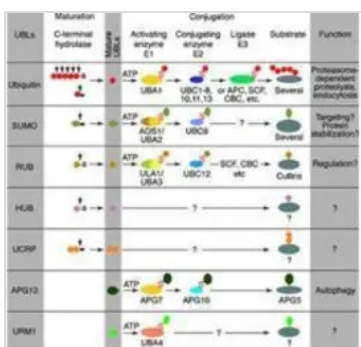
Purchasers shall not, and agree not to enable third parties to, analyze, copy, reverse engineer or otherwise attempt to determine the structure or sequence of the product.

DATA IMAGES

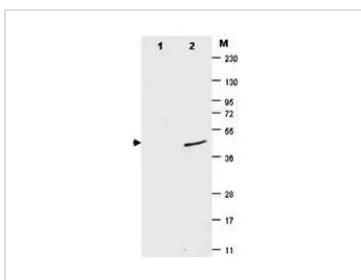


GTX48824 WB Image

Western blot of γ SUMO fusion protein. Anti- γ SUMO antibody, generated by immunization with recombinant yeast SUMO, was tested by western blot against a SUMO-GFP fusion protein (lane 2). While the actual molecular weight of the fusion protein is 39 kDa, the protein migrates as a 49 kDa band (arrowhead). No reactivity is seen for lane 1 which contains His-tagged GFP protein. The membrane was blocked using BLOTTO. Primary antibody was used at a 1:1,000 dilution in BLOTTO. The membrane was washed and reacted with a 1:10,000 dilution of IRDyeR 800 Conjugated Affinity Purified Goat-anti-Mouse IgG (H&L).



GTX48824 Image



GTX48824 WB Image

WB analysis of various recombinant proteins using GTX48824 Sumo antibody [4F2.F5.G2].
 Lane 1 : His-tagged GFP
 Lane 2 : Sumo-GFP fusion protein
 Dilution : 1:1000



For full product information, images and publications, please visit our [website](#).