

pan Cytokeratin antibody [C-11]

Cat. No. GTX48825

| | |
|--------------|--------------------------------------------|
| Host | Mouse |
| Clonality | Monoclonal |
| Isotype | IgG1 |
| Applications | WB, ICC/IF, IHC-P, IP, ELISA, Multiplexing |
| Reactivity | Human |

References (16)

Package

50 µg

Applications

Application Note

*Optimal dilutions/concentrations should be determined by the researcher.

| Suggested dilution | Recommended dilution |
|--------------------|----------------------|
| WB | 1:50-1:200 |
| ICC/IF | 1:50-1:200 |
| IHC-P | 1:50-1:200 |
| IP | 1:100 |
| ELISA | 1:5000-1:20000 |
| Multiplexing | Assay dependent |

Not tested in other applications.

Calculated MW 60 kDa. ([Note](#))

Product Note This antibody reacts with keratin (56 kDa), keratin 17 (46 kDa), keratin 18 (45 kDa) and keratin 19 (40 kDa) derived from humans.

Properties

| | |
|---------------|----------------------------------------------------------------------------------------------------------------------------------------------------------------------------------------------------------------------------|
| Form | Liquid |
| Buffer | 20mM Potassium Phosphate, 150mM NaCl |
| Preservative | 0.01% Sodium azide |
| Storage | Store as concentrated solution. Centrifuge briefly prior to opening vial. For short-term storage (1-2 weeks), store at 4°C. For long-term storage, aliquot and store at -20°C or below. Avoid multiple freeze-thaw cycles. |
| Concentration | 1.3 mg/ml (Please refer to the vial label for the specific concentration.) |
| Immunogen | Purified human cytoskeletal preparations from A431 cells. |
| Purification | Protein A purified |



For full product information, images and publications, please visit our [website](#).

Date 2026 / 01 / 29 Page 1 of 2

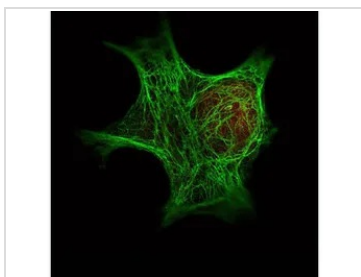
Conjugation

Unconjugated

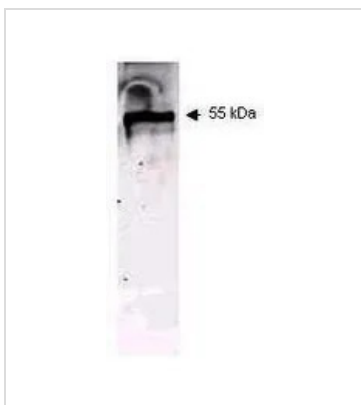
Note

For laboratory research use only. Not for any clinical, therapeutic, or diagnostic use in humans or animals. Not for animal or human consumption.

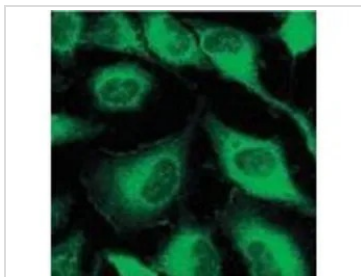
Purchasers shall not, and agree not to enable third parties to, analyze, copy, reverse engineer or otherwise attempt to determine the structure or sequence of the product.

DATA IMAGES

GTX48825 ICC/IF Image

Immunofluorescence Microscopy of GeneTex Anti-Keratin antibody (GTX48825) was used with GeneTex Dylight 488 goat anti-mouse (shown in green) to detect Keratin by Immunofluorescence. In the same experiment, GeneTex polyclonal Anti-HDAC-1 antibody was used with Anti-Rabbit IgG (shown in red) to detect HDAC-1.


GTX48825 WB Image

Western blot using GeneTex Immunochemical's Mouse Mab-anti-Keratin antibody. This antibody recognizes a single 56 kDa band corresponding to human keratin as confirmed by the position of molecular weight markers (not shown). Approximately 100 µg of keratin from human epidermis was applied under reducing conditions. 1:400 dilution of Mab anti-Keratin was used for 2h followed by detection using a 1:5,000 dilution of IRDye™800 conjugated Goat anti-Mouse IgG [H&L] and visualization using the OdysseyR Infrared Imaging System developed by LI-COR.


GTX48825 ICC/IF Image

Immunofluorescence microscopy using GeneTex Immunochemical's Mouse Mab-anti-Keratin antibody. Confocal slices of HeLa cells are between 0.5 and 0.6 µm where the image is taken near the bottom of the cell. Use FITC a 1:2,000 dilution of FITC-conjugated Goat anti-Mouse IgG [H&L] for detection.



For full product information, images and publications, please visit our [website](https://www.genetex.com).