

## Lysozyme antibody

**Cat. No. GTX48846**

<b>Host</b>	Rabbit
<b>Clonality</b>	Polyclonal
<b>Isotype</b>	IgG
<b>Applications</b>	WB, IP, ELISA
<b>Reactivity</b>	Chicken

References ( 2 )  
 Package  
 100 µl

## Applications

**Application Note**

\*Optimal dilutions/concentrations should be determined by the researcher.

Suggested dilution	Recommended dilution
WB	1:500-1:5000
IP	1:100
ELISA	1:5000-1:20000

Not tested in other applications.

**Calculated MW** 16 kDa. ( [Note](#) )

## Properties

<b>Form</b>	Liquid
<b>Buffer</b>	20mM Potassium Phosphate, 150mM NaCl
<b>Preservative</b>	0.01% Sodium azide
<b>Storage</b>	Store as concentrated solution. Centrifuge briefly prior to opening vial. For short-term storage (1-2 weeks), store at 4°C. For long-term storage, aliquot and store at -20°C or below. Avoid multiple freeze-thaw cycles.
<b>Concentration</b>	80 mg/ml (Please refer to the vial label for the specific concentration.)
<b>Immunogen</b>	Lysozyme collected from hen egg white
<b>Conjugation</b>	Unconjugated

**Note**

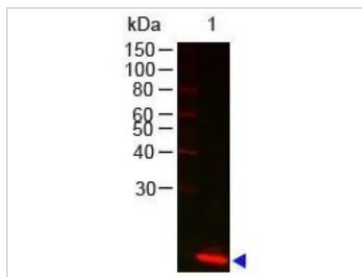
For laboratory research use only. Not for any clinical, therapeutic, or diagnostic use in humans or animals. Not for animal or human consumption.

Purchasers shall not, and agree not to enable third parties to, analyze, copy, reverse engineer or otherwise attempt to determine the structure or sequence of the product.

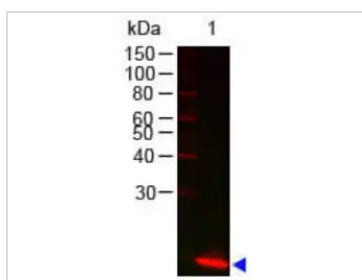


For full product information, images and publications, please visit our [website](#).

## DATA IMAGES

**GTX48846 WB Image**

Western Blot of Rabbit anti-Lysozyme antibody (GTX48846). Lane 1: Lysozyme. Load: 100 ng per lane.  
Primary antibody: Lysozyme antibody at 1:1000 for overnight at 4°C. Secondary antibody: DyLight 649  
goat anti-rabbit at 1:20,000 for 30 min at RT. Predicted/Observed size: 14 kDa.

**GTX48846 WB Image**

WB analysis of recombinant chicken lysozyme using GTX48846 Lysozyme antibody.  
Loading : 100 ng  
Dilution : 1:1000



For full product information, images and publications, please visit our [website](#).