

KCNN2 antibody, C-term

Cat. No. GTX49068

Host	Rabbit
Clonality	Polyclonal
Isotype	IgG
Applications	WB, IHC-P
Reactivity	Human, Rat, Monkey

Package
100 µg

Applications

Application Note

*Optimal dilutions/concentrations should be determined by the researcher.

Suggested dilution	Recommended dilution
WB	0.2-2.5 ug/ml
IHC-P	2-10 ug/ml

Not tested in other applications.

Calculated MW 64 kDa. ([Note](#))

Properties

Form	Liquid
Buffer	PBS, 2% Sucrose
Preservative	0.09% Sodium azide
Storage	Store as concentrated solution. Centrifuge briefly prior to opening vial. For short-term storage (1-2 weeks), store at 4°C. For long-term storage, aliquot and store at -20°C or below. Avoid multiple freeze-thaw cycles.
Concentration	0.5-1 mg/ml (Please refer to the vial label for the specific concentration.)
Immunogen	A synthetic peptide corresponding to a C-terminal region of Human KCNN2.
Purification	Protein A purified
Conjugation	Unconjugated

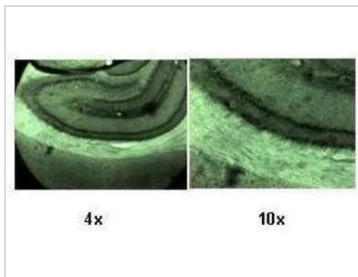
Note

For laboratory research use only. Not for any clinical, therapeutic, or diagnostic use in humans or animals. Not for animal or human consumption.

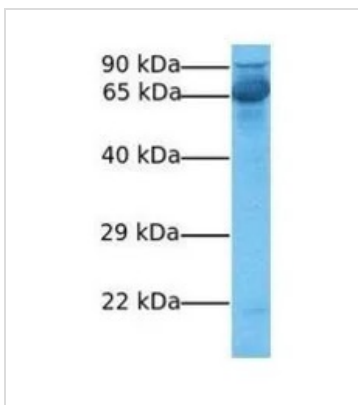
Purchasers shall not, and agree not to enable third parties to, analyze, copy, reverse engineer or otherwise attempt to determine the structure or sequence of the product.



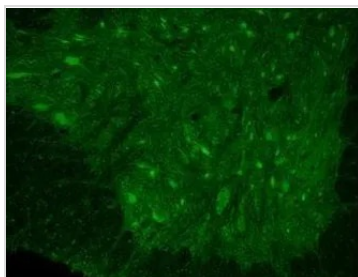
For full product information, images and publications, please visit our [website](#).

DATA IMAGES

GTX49068 IHC-P Image

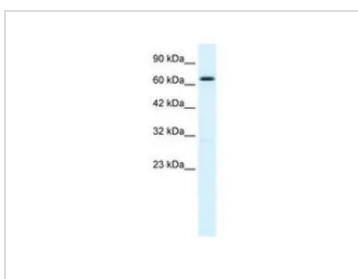
IHC-P analysis of rat brain tissue using GTX49068 KCa2.2 antibody at 1:500.


GTX49068 WB Image

WB analysis of human fetal liver tissue using GTX49068 KCa2.2 antibody at 1µg/ml.


GTX49068 IHC-P Image

IHC-P analysis of Rhesus macaque spinal cord tissue using GTX49068 KCa2.2 antibody at 1:300.


GTX49068 WB Image

WB analysis of HepG2 cells using GTX49068 KCa2.2 antibody at 1.25µg/ml.



For full product information, images and publications, please visit our [website](https://www.genetex.com).