

RAD9A antibody [3A3-A7-F8]

Cat. No. GTX49140

Host	Mouse
Clonality	Monoclonal
Isotype	IgG2b
Applications	WB, IP
Reactivity	Human, Mouse, Rat, Monkey

Package
100 µg

Applications

Application Note

*Optimal dilutions/concentrations should be determined by the researcher.

Suggested dilution	Recommended dilution
WB	Assay dependent
IP	Assay dependent

Not tested in other applications.

Calculated MW 43 kDa. ([Note](#))

Properties

Form	Liquid
Buffer	PBS, 0.5% BSA, 50% glycerol
Preservative	0.02% Sodium azide
Storage	Store as concentrated solution. Centrifuge briefly prior to opening vial. For short-term storage (1-2 weeks), store at 4°C. For long-term storage, aliquot and store at -20°C or below. Avoid multiple freeze-thaw cycles.
Concentration	Batch dependent (Please refer to the vial label for the specific concentration.)
Immunogen	Purified recombinant human Rad9A protein fragments expressed in E.coli
Purification	Purified by affinity chromatography
Conjugation	Unconjugated

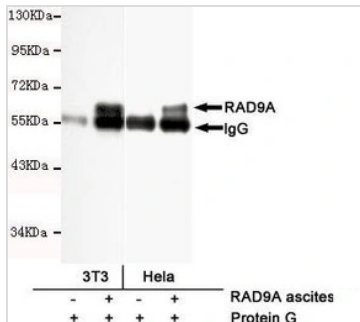
Note

For laboratory research use only. Not for any clinical, therapeutic, or diagnostic use in humans or animals. Not for animal or human consumption.

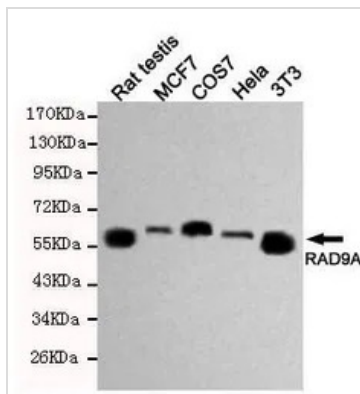
Purchasers shall not, and agree not to enable third parties to, analyze, copy, reverse engineer or otherwise attempt to determine the structure or sequence of the product.



For full product information, images and publications, please visit our [website](#).

DATA IMAGES

GTX49140 IP Image

IP analysis of 3T3 and HeLa lysates using control IgG and RAD9A antibody. The precipitates were detected by the same RAD9A antibody.


GTX49140 WB Image

WB analysis of indicated lysates using RAD9A antibody at a dilution of 1:500.



For full product information, images and publications, please visit our [website](http://www.genetex.com).