

## DCTN1 antibody [3D5-C6-D5]

**Cat. No. GTX49164**

<b>Host</b>	Mouse
<b>Clonality</b>	Monoclonal
<b>Isotype</b>	IgG2b
<b>Applications</b>	WB, IP
<b>Reactivity</b>	Human

**Package**  
100 µg

## Applications

**Application Note**

\*Optimal dilutions/concentrations should be determined by the researcher.

Suggested dilution	Recommended dilution
WB	Assay dependent
IP	Assay dependent

Not tested in other applications.

**Calculated MW** 142 kDa. ([Note](#))

## Properties

<b>Form</b>	Liquid
<b>Buffer</b>	PBS, 0.5% BSA, 50% glycerol
<b>Preservative</b>	0.02% Sodium azide
<b>Storage</b>	Store as concentrated solution. Centrifuge briefly prior to opening vial. For short-term storage (1-2 weeks), store at 4°C. For long-term storage, aliquot and store at -20°C or below. Avoid multiple freeze-thaw cycles.
<b>Concentration</b>	Batch dependent (Please refer to the vial label for the specific concentration.)
<b>Immunogen</b>	Purified recombinant DCTN1 protein fragments expressed in E.coli
<b>Purification</b>	Purified by affinity chromatography
<b>Conjugation</b>	Unconjugated

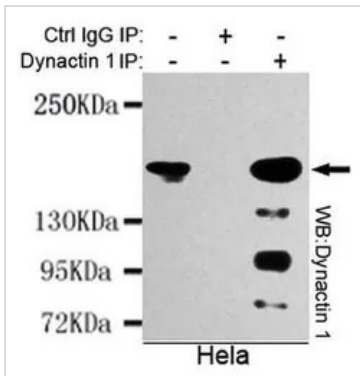
**Note**

For laboratory research use only. Not for any clinical, therapeutic, or diagnostic use in humans or animals. Not for animal or human consumption.

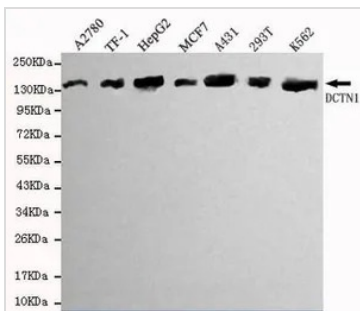
Purchasers shall not, and agree not to enable third parties to, analyze, copy, reverse engineer or otherwise attempt to determine the structure or sequence of the product.



For full product information, images and publications, please visit our [website](#).

**DATA IMAGES**

**GTX49164 IP Image**

IP analysis of HeLa lysates using control IgG and Dynactin 1 antibody. The precipitates were detected by the same Dynactin 1 antibody.


**GTX49164 WB Image**

WB analysis of indicated lysate using Dynactin 1 antibody at a dilution of 1:1,000.



For full product information, images and publications, please visit our [website](#).