

## SMC1A antibody [8E6-A4-F3]

Cat. No. GTX49176

Host	Mouse
Clonality	Monoclonal
Isotype	IgG1
Application	WB, IHC-P, FACS
Reactivity	Human

Package  
100 µg

## APPLICATION

## Application Note

\*Optimal dilutions/concentrations should be determined by the researcher.

Suggested dilution	Recommended dilution
WB	Assay dependent
IHC-P	Assay dependent
FACS	Assay dependent

Not tested in other applications.

Calculated MW 143 kDa. ([Note](#))

## PROPERTIES

Form	Liquid
Buffer	0.1M Tris-Glycine, 150mM NaCl, 50% Glycerol
Preservative	0.02% Sodium azide
Storage	Store as concentrated solution. Centrifuge briefly prior to opening vial. For short-term storage (1-2 weeks), store at 4°C. For long-term storage, aliquot and store at -20°C or below. Avoid multiple freeze-thaw cycles.
Concentration	Batch dependent (Please refer to the vial label for the specific concentration.)
Immunogen	Purified recombinant human SMC1A protein fragments expressed in E.coli.
Purification	Affinity purified
Conjugation	Unconjugated

## Note

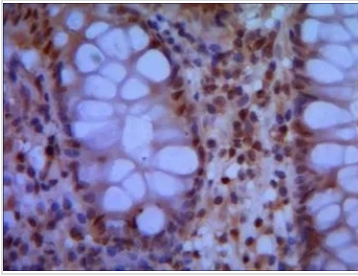
For laboratory research use only. Not for any clinical, therapeutic, or diagnostic use in humans or animals. Not for animal or human consumption.

Purchasers shall not, and agree not to enable third parties to, analyze, copy, reverse engineer or otherwise attempt to determine the structure or sequence of the product.



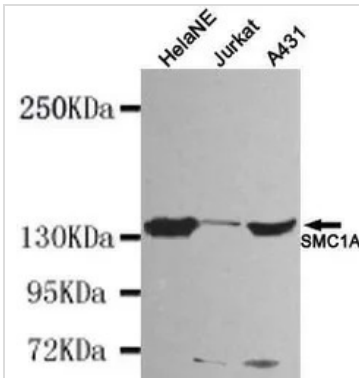
For full product information, images and publications, please visit our [website](#).

## DATA IMAGES



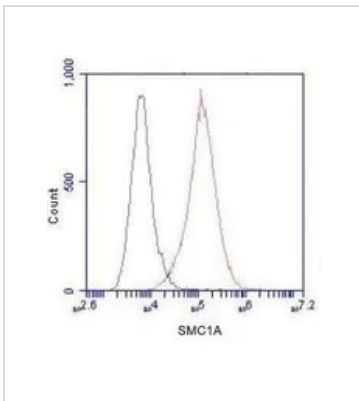
**GTx49176 IHC-P Image**

IHC-P analysis of human colon tissue using SMC1A antibody.



**GTx49176 WB Image**

WB analysis of HeLaNE, Jurkat and A431 lysates using SMC1A antibody at a dilution of 1:1,000.



**GTx49176 FACS Image**

FACS analysis of HeLa cells using SMC1A antibody at a dilution of 1:100 (red) or an isotype control (black).



For full product information, images and publications, please visit our [website](https://www.genetex.com).