

SWAP70 antibody [2E9-E8-E9]

Cat. No. GTX49244

Host	Mouse
Clonality	Monoclonal
Isotype	IgG2b
Applications	WB, IP
Reactivity	Human, Mouse, Rat, Hamster

Package
100 µg

Applications

Application Note

*Optimal dilutions/concentrations should be determined by the researcher.

Suggested dilution	Recommended dilution
WB	Assay dependent
IP	Assay dependent

Not tested in other applications.

Calculated MW 69 kDa. ([Note](#))

Properties

Form	Liquid
Buffer	PBS, 0.5% BSA, 50% glycerol
Preservative	0.02% Sodium azide
Storage	Store as concentrated solution. Centrifuge briefly prior to opening vial. For short-term storage (1-2 weeks), store at 4°C. For long-term storage, aliquot and store at -20°C or below. Avoid multiple freeze-thaw cycles.
Concentration	Batch dependent (Please refer to the vial label for the specific concentration.)
Immunogen	Purified recombinant human SWAP70 protein fragments expressed in E.coli.
Purification	Purified by affinity chromatography
Conjugation	Unconjugated

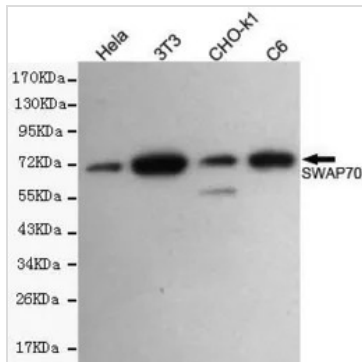
Note

For laboratory research use only. Not for any clinical, therapeutic, or diagnostic use in humans or animals. Not for animal or human consumption.

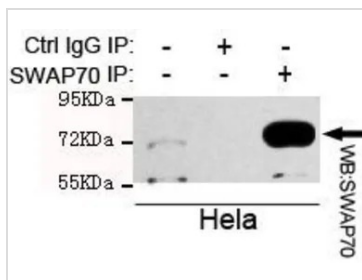
Purchasers shall not, and agree not to enable third parties to, analyze, copy, reverse engineer or otherwise attempt to determine the structure or sequence of the product.



For full product information, images and publications, please visit our [website](#).

DATA IMAGES

GTx49244 WB Image

WB analysis of HeLa, 3T3, CHO-K1 and C6 lysates using SWAP70 antibody at a dilution of 1:500.


GTx49244 IP Image

IP analysis of HeLa lysate using control IgG and SWAP70 antibody. The precipitates were detected by the same SWAP70 antibody.



For full product information, images and publications, please visit our [website](https://www.genetex.com).