

Caspase 3 p17 subunit antibody

Cat. No. GTX49360

| | |
|--------------|------------|
| Host | Rabbit |
| Clonality | Polyclonal |
| Isotype | IgG |
| Applications | WB, IHC-P |
| Reactivity | Human |

Package
100 µl

Applications

Application Note

WB: 1:500 - 1:1000, IHC-P: 1:50 - 1:200

Calculated MW 32 kDa. ([Note](#))

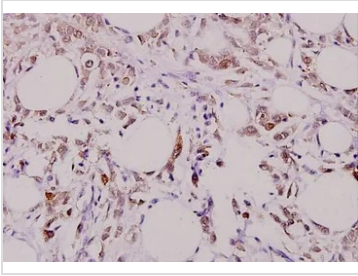
Product Note Activated-Caspase-3 p17 pAb detects endogenous levels of Activated-Caspase-3 p17 protein.

Properties

| | |
|---------------|---|
| Form | Liquid |
| Buffer | PBS |
| Preservative | 15mM Sodium azide |
| Storage | Store as concentrated solution. Centrifuge briefly prior to opening vial. For short-term storage (1-2 weeks), store at 4°C. For long-term storage, aliquot and store at -20°C or below. Avoid multiple freeze-thaw cycles. |
| Concentration | 1 mg/ml (Please refer to the vial label for the specific concentration.) |
| Immunogen | Synthetic peptide conjugated to KLH derived from within residues 150 - 200 of Human active Caspase 3. |
| Purification | The antibody was affinity-purified from rabbit antiserum by affinity-chromatography using epitope-specific immunogen. |
| Conjugation | Unconjugated |
| Note | <p>For laboratory research use only. Not for any clinical, therapeutic, or diagnostic use in humans or animals. Not for animal or human consumption.</p> <p>Purchasers shall not, and agree not to enable third parties to, analyze, copy, reverse engineer or otherwise attempt to determine the structure or sequence of the product.</p> |

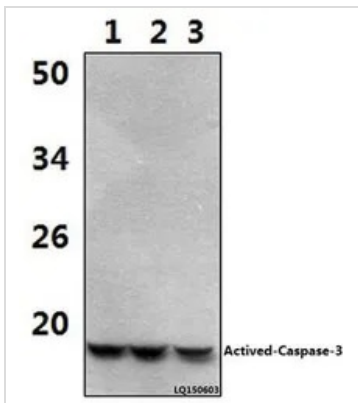
For full product information, images and publications, please visit our [website](#).

DATA IMAGES



GTx49360 IHC-P Image

Immunohistochemistry (IHC) analyzes of Active-Caspase-3 p17 pAb in paraffin-embedded human breast carcinoma tissue at 1:100.



GTx49360 WB Image

Western blot (WB) analysis of Active-Caspase-3 p17 pAb at 1:500 dilution. Lane1:Hela whole cell lysate(40ug). Lane2:Hela treated with H₂O₂ (100nmol/ml, 25min, phostop) whole cell lysate (40ug). Lane3:Hela treated with H₂O₂ (100nmol/ml, 25min, λ-ppase)



For full product information, images and publications, please visit our [website](https://www.genetex.com).