

## ENaC Gamma antibody [11-35-1]

Cat. No. GTX49367

Host	Mouse
Clonality	Monoclonal
Isotype	IgG1
Application	WB, ICC/IF, IHC-P, ELISA, IHC (Formalin)
Reactivity	Human

Package  
100 µl

## APPLICATION

## Application Note

\*Optimal dilutions/concentrations should be determined by the researcher.

Suggested dilution	Recommended dilution
WB	Assay dependent
ICC/IF	Assay dependent
IHC-P	Assay dependent
ELISA	Assay dependent
IHC (Formalin)	Assay dependent

Not tested in other applications.

**Calculated MW** 74 kDa. ( [Note](#) )**Product Note** This antibody is specific for the neopeptide generated after proteolytic cleavage of human yENaC and recognizes the C-terminal fragment.

## PROPERTIES

Form	Liquid
Buffer	0.01M Phosphate buffer, 0.5M NaCl
Preservative	15mM Sodium azide
Storage	Store as concentrated solution. Centrifuge briefly prior to opening vial. Store at 4°C.
Concentration	Batch dependent (Please refer to the vial label for the specific concentration.)
Immunogen	Synthetic peptide sequence: VGGSIIHKAC
Purification	Protein-A purified
Conjugation	Unconjugated



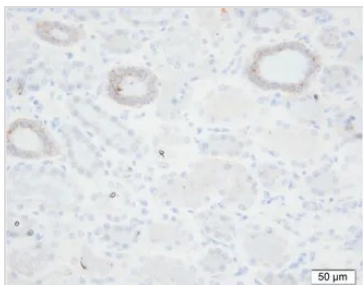
For full product information, images and publications, please visit our [website](#).

## Note

For laboratory research use only. Not for any clinical, therapeutic, or diagnostic use in humans or animals. Not for animal or human consumption.

Purchasers shall not, and agree not to enable third parties to, analyze, copy, reverse engineer or otherwise attempt to determine the structure or sequence of the product.

## DATA IMAGES



### GTx49367 IHC-P Image

Immunohistochemical staining of a formalin-fixed, paraffin-embedded kidney tissue with GTx49367. Courtesy of Per Svenningsen, PhD.



For full product information, images and publications, please visit our [website](#).