

Claudin 5 antibody

Cat. No. GTX49370

Host	Rabbit
Clonality	Polyclonal
Isotype	IgG
Applications	WB, IHC-P
Reactivity	Human, Mouse, Rat, Monkey

References (12)
Package
100 µl

Applications

Application Note

WB: 1:500-1:1000, IHC: 1:50-1:200, ICC/IF: 1:50-1:200

Calculated MW 23 kDa. ([Note](#))

Properties

Form	Liquid
Buffer	PBS
Preservative	0.05% Sodium azide
Storage	Store as concentrated solution. Centrifuge briefly prior to opening vial. For short-term storage (1-2 weeks), store at 4°C. For long-term storage, aliquot and store at -20°C or below. Avoid multiple freeze-thaw cycles.
Concentration	1 mg/ml (Please refer to the vial label for the specific concentration.)
Immunogen	Synthetic peptide, corresponding to amino acids 171-220 of Human Claudin-5.
Purification	The antibody was affinity-purified from rabbit antiserum by affinity-chromatography using epitope-specific immunogen.
Conjugation	Unconjugated

Note

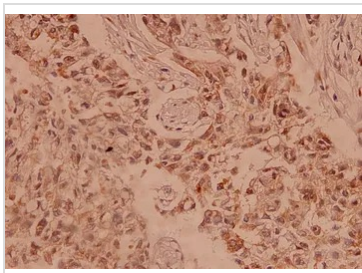
For laboratory research use only. Not for any clinical, therapeutic, or diagnostic use in humans or animals. Not for animal or human consumption.

Purchasers shall not, and agree not to enable third parties to, analyze, copy, reverse engineer or otherwise attempt to determine the structure or sequence of the product.

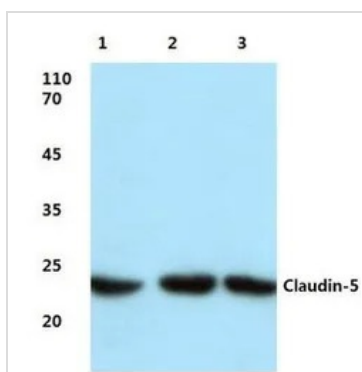


For full product information, images and publications, please visit our [website](#).

DATA IMAGES

**GTX49370 IHC-P Image**

Immunohistochemistry (IHC) analyzes of Claudin-5 pAb in paraffin-embedded human breast carcinoma tissue at 1:100.

**GTX49370 WB Image**

Western blot (WB) analysis of Claudin-5 pAb at 1:500 dilution Lane1:Hela cell lysate treated with LPS
Lane2:Mouse liver tissue lysate Lane3:Rat lung tissue lysate



For full product information, images and publications, please visit our [website](#).