

VLDL Receptor antibody [6A6]

Cat. No. GTX49372

Host	Mouse
Clonality	Monoclonal
Isotype	IgG1
Applications	WB, ICC/IF, IHC-P
Reactivity	Human, Mouse, Rat, Bovine

Package
100 µl

Applications

Application Note

*Optimal dilutions/concentrations should be determined by the researcher.

Suggested dilution	Recommended dilution
WB	1:1000
ICC/IF	1:50
IHC-P	1:200

Not tested in other applications.

Calculated MW 96 kDa. ([Note](#))

Properties

Form	Liquid
Buffer	PBS
Preservative	0.02% Sodium azide
Storage	Store as concentrated solution. Centrifuge briefly prior to opening vial. For short-term storage (1-2 weeks), store at 4°C. For long-term storage, aliquot and store at -20°C or below. Avoid multiple freeze-thaw cycles.
Concentration	1 mg/ml (Please refer to the vial label for the specific concentration.)
Immunogen	Synthetic peptide corresponding to the C-terminus of human VLDL Receptor [Swiss-Prot# P98155]
Purification	Protein G purified
Conjugation	Unconjugated

Note

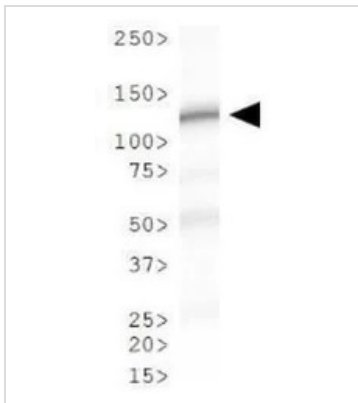
For laboratory research use only. Not for any clinical, therapeutic, or diagnostic use in humans or animals. Not for animal or human consumption.

Purchasers shall not, and agree not to enable third parties to, analyze, copy, reverse engineer or otherwise attempt to determine the structure or sequence of the product.

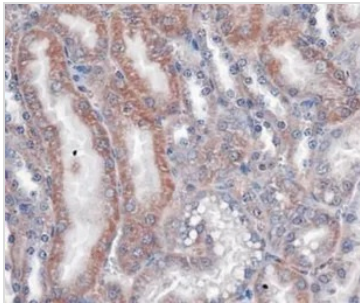


For full product information, images and publications, please visit our [website](#).

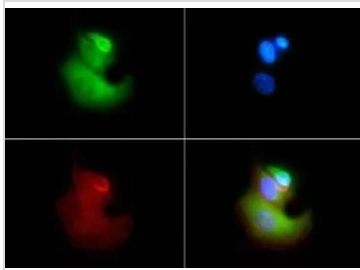
DATA IMAGES

**GTX49372 WB Image**

WB analysis of mouse kidney tissue using GTX49372 VLDL Receptor antibody [6A6].

**GTX49372 IHC-P Image**

IHC-P analysis of mouse kidney tissue using GTX49372 VLDL Receptor antibody [6A6].

**GTX49372 ICC/IF Image**

ICC/IF analysis of HeLa cells using GTX49372 VLDL Receptor antibody [6A6].

Green : primary antibody

Red : Actin

Blue : DAPI



For full product information, images and publications, please visit our [website](#).