

# FRA2 antibody

**Cat. No. GTX49376**

<b>Host</b>	Rabbit
<b>Clonality</b>	Polyclonal
<b>Isotype</b>	IgG
<b>Applications</b>	WB, IHC-P
<b>Reactivity</b>	Human, Mouse, Rat

**Package**  
100 µl

## Applications

### Application Note

WB: 1:500-1:1000, IHC-P: 1:50-1:200

<b>Calculated MW</b>	35 kDa. ( <a href="#">Note</a> )
<b>Product Note</b>	FOSL2 (S301) pAb detects endogenous levels of FOSL2 protein.

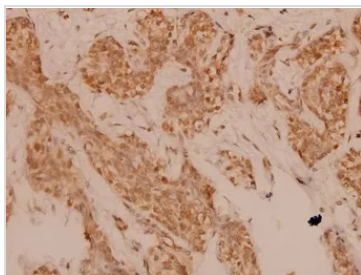
## Properties

<b>Form</b>	Liquid
<b>Buffer</b>	PBS
<b>Preservative</b>	15mM Sodium azide
<b>Storage</b>	Store as concentrated solution. Centrifuge briefly prior to opening vial. For short-term storage (1-2 weeks), store at 4°C. For long-term storage, aliquot and store at -20°C or below. Avoid multiple freeze-thaw cycles.
<b>Concentration</b>	1 mg/ml (Please refer to the vial label for the specific concentration.)
<b>Immunogen</b>	Synthetic peptide, corresponding to amino acids 270-320 of Human FOSL2.
<b>Purification</b>	The antibody was affinity-purified from rabbit antiserum by affinity-chromatography using epitope-specific immunogen
<b>Conjugation</b>	Unconjugated
<b>Note</b>	For laboratory research use only. Not for any clinical, therapeutic, or diagnostic use in humans or animals. Not for animal or human consumption.  Purchasers shall not, and agree not to enable third parties to, analyze, copy, reverse engineer or otherwise attempt to determine the structure or sequence of the product.



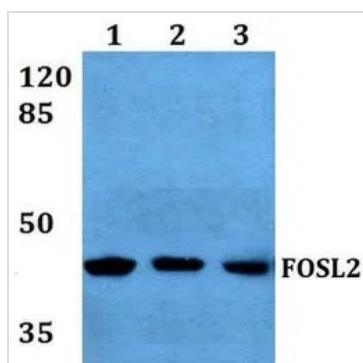
For full product information, images and publications, please visit our [website](#).

## DATA IMAGES



### GTx49376 IHC-P Image

Immunohistochemistry (IHC) analyzes of FOSL2 pAb in paraffin-embedded human breast carcinoma tissue at 1:100.



### GTx49376 WB Image

Western blot (WB) analysis of FOSL2 pAb at 1:500 dilution Lane1:MCF-7 whole cell lysate Lane2:NIH-3T3 whole cell lysate Lane3:H9C2 whole cell lysate



For full product information, images and publications, please visit our [website](https://www.genetex.com).