

PAK1 ELISA Pair

Cat. No. GTX500005

Applications	ELISA, Sandwich ELISA
Reactivity	Human

Package
1 pair

PRODUCT

Product Content

Cat No.	Type	Host	Conjugation	Package
GTX111076	Capture Antibody	Rabbit	Unconjugated	50 µl
GTX89274	Detection Antibody	Goat	Unconjugated	50 µl

Applications

Application Note

*Optimal dilutions/concentrations should be determined by the researcher.

Suggested dilution	Recommended dilution
ELISA	Assay dependent
Sandwich ELISA	Assay dependent

Not tested in other applications.

Properties

Form Liquid

Storage Store as concentrated solution. Centrifuge briefly prior to opening vial. For short-term storage (1-2 weeks), store at 4°C. For long-term storage, aliquot and store at -20°C or below. Avoid multiple freeze-thaw cycles.

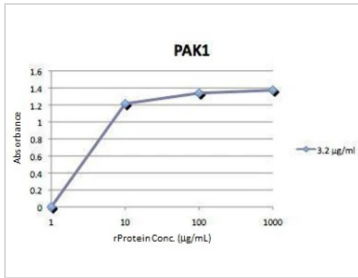
Note For laboratory research use only. Not for any clinical, therapeutic, or diagnostic use in humans or animals. Not for animal or human consumption.

Purchasers shall not, and agree not to enable third parties to, analyze, copy, reverse engineer or otherwise attempt to determine the structure or sequence of the product.



For full product information, images and publications, please visit our [website](#).

DATA IMAGES

**GTX500005 ELISA Image**

ELISA detection of PAK1 using GTX111076 for capture and GTX89274 for detection at a concentration of 3.2 µg/mL. The HRP-conjugated anti-goat IgG antibody (GTX26741) was diluted at 1:20,000-1:200,000 and used to detect the primary antibody.



For full product information, images and publications, please visit our [website](#).