

p27 Kip1 ELISA Pair

Cat. No. GTX500006

Applications ELISA, Sandwich ELISA**Reactivity** Human**Package**

1 pair

PRODUCT

Product Content

Cat No.	Type	Host	Conjugation	Package
GTX100446	Capture Antibody	Rabbit	Unconjugated	50 µl
GTX89392	Detection Antibody	Goat	Unconjugated	50 µl

Applications

Application Note

*Optimal dilutions/concentrations should be determined by the researcher.

Suggested dilution	Recommended dilution
--------------------	----------------------

ELISA	Assay dependent
-------	-----------------

Sandwich ELISA	Assay dependent
----------------	-----------------

Not tested in other applications.

Properties

Form	Liquid
-------------	--------

Storage	Store as concentrated solution. Centrifuge briefly prior to opening vial. For short-term storage (1-2 weeks), store at 4°C. For long-term storage, aliquot and store at -20°C or below. Avoid multiple freeze-thaw cycles.
----------------	--

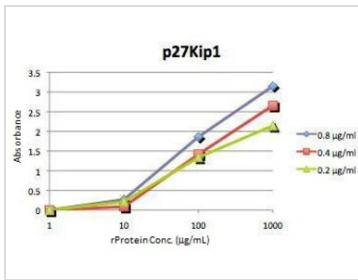
Note	For laboratory research use only. Not for any clinical, therapeutic, or diagnostic use in humans or animals. Not for animal or human consumption.
-------------	---

	Purchasers shall not, and agree not to enable third parties to, analyze, copy, reverse engineer or otherwise attempt to determine the structure or sequence of the product.
--	---



For full product information, images and publications, please visit our [website](#).

DATA IMAGES



GTX500006 ELISA Image

ELISA detection of p27^{kip1} using GTX100446 for capture at a concentration of 5 µg/mL and GTX89392 for detection at a concentration of 0.2-0.8 µg/mL. The HRP-conjugated anti-goat IgG antibody (GTX26741) was diluted at 1:20,000-1:200,000 and used to detect the primary antibody.



For full product information, images and publications, please visit our [website](#).