

G6PD ELISA Pair

Cat. No. GTX500012

Application	ELISA, Sandwich ELISA
Reactivity	Human

Package
1 pair

PRODUCT

Product Content

Cat No.	Type	Host	Conjugation	Package
GTX113186	Capture Antibody	Rabbit	Unconjugated	50 µl
GTX89057	Detection Antibody	Goat	Unconjugated	50 µl

APPLICATION

Application Note

We recommend using the capture antibody at a concentration of 5 µg/mL and the detection antibody at a concentration of 5 µg/mL. Optimal dilutions should be determined experimentally by the researcher.

PROPERTIES

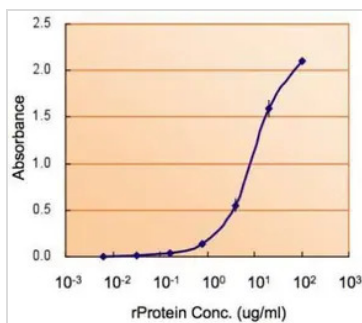
Form Liquid

Storage Store as concentrated solution. Centrifuge briefly prior to opening vial. For short-term storage (1-2 weeks), store at 4°C. For long-term storage, aliquot and store at -20°C or below. Avoid multiple freeze-thaw cycles.

Note For laboratory research use only. Not for any clinical, therapeutic, or diagnostic use in humans or animals. Not for animal or human consumption.

Purchasers shall not, and agree not to enable third parties to, analyze, copy, reverse engineer or otherwise attempt to determine the structure or sequence of the product.

DATA IMAGES



GTX500012 ELISA Image

ELISA detection of G6PD using GTX113186 for capture at a concentration of 5 µg/mL and GTX89057 for detection at a concentration of 5 µg/mL. The HRP-conjugated anti-goat IgG antibody (GTX26741) was diluted at 1:20,000-1:200,000 and used to detect the primary antibody.



For full product information, images and publications, please visit our [website](#).