

Von Hippel Lindau ELISA Pair

Cat. No. GTX500022

Application ELISA, Sandwich ELISA

Reactivity Human

Package

1 pair

PRODUCT

Product Content

| Cat No. | Type | Host | Conjugation | Package |
|-----------|--------------------|--------|--------------|---------|
| GTX101087 | Capture Antibody | Rabbit | Unconjugated | 50 µl |
| GTX89268 | Detection Antibody | Goat | Unconjugated | 50 µl |

APPLICATION

Application Note

We recommend using the capture antibody at a concentration of 2.5µg/mL and the detection antibody at a concentration of 1.5µg/mL. Optimal dilutions should be determined experimentally by the researcher.

PROPERTIES

Form Liquid

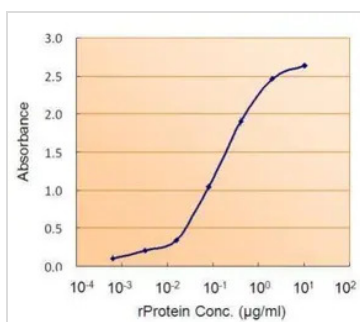
Storage Store as concentrated solution. Centrifuge briefly prior to opening vial. For short-term storage (1-2 weeks), store at 4°C. For long-term storage, aliquot and store at -20°C or below. Avoid multiple freeze-thaw cycles.

Note

For laboratory research use only. Not for any clinical, therapeutic, or diagnostic use in humans or animals. Not for animal or human consumption.

Purchasers shall not, and agree not to enable third parties to, analyze, copy, reverse engineer or otherwise attempt to determine the structure or sequence of the product.

DATA IMAGES



GTX500022 ELISA Image

ELISA detection of VHL using GTX101087 for capture at a concentration of 2.5 µg/mL and GTX89268 for detection at a concentration of 1.5 µg/mL. The HRP-conjugated anti-goat IgG antibody (GTX26741) was diluted at 1:20,000-1:200,000 and used to detect the primary antibody.



For full product information, images and publications, please visit our [website](#).