

## GFAP ELISA Pair

**Cat. No. GTX500023****Applications** ELISA, Sandwich ELISA**Reactivity** Mouse, Rat**Package**

1 pair

## PRODUCT

## Product Content

| Cat No.   | Type               | Host   | Conjugation  | Package |
|-----------|--------------------|--------|--------------|---------|
| GTX108711 | Capture Antibody   | Rabbit | Unconjugated | 50 µl   |
| GTX89226  | Detection Antibody | Goat   | Unconjugated | 50 µl   |

## Applications

## Application Note

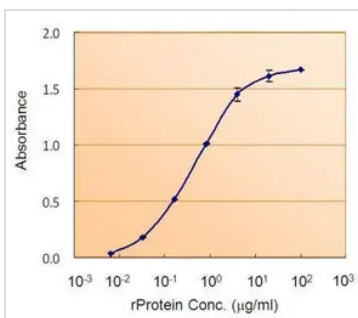
We recommend using the capture antibody at a concentration of 5µg/mL and the detection antibody at a concentration of 5µg/mL. Optimal dilutions should be determined experimentally by the researcher.

## Properties

**Form** Liquid**Storage** Store as concentrated solution. Centrifuge briefly prior to opening vial. For short-term storage (1-2 weeks), store at 4°C. For long-term storage, aliquot and store at -20°C or below. Avoid multiple freeze-thaw cycles.**Note** For laboratory research use only. Not for any clinical, therapeutic, or diagnostic use in humans or animals. Not for animal or human consumption.

Purchasers shall not, and agree not to enable third parties to, analyze, copy, reverse engineer or otherwise attempt to determine the structure or sequence of the product.

## DATA IMAGES



## GTX500023 ELISA Image

ELISA detection of GFAP using GTX108711 for capture at a concentration of 5 µg/mL and GTX89226 for detection at a concentration of 5 µg/mL. The HRP-conjugated anti-goat IgG antibody (GTX26741) was diluted at 1:20,000-1:200,000 and used to detect the primary antibody.



For full product information, images and publications, please visit our [website](#).