

Cyclin D1 ELISA Pair

Cat. No. GTX500039

Application ELISA, Sandwich ELISA**Reactivity** Human**Package**

1 pair

PRODUCT

Product Content

Cat No.	Type	Host	Conjugation	Package
GTX108624	Detection Antibody	Rabbit	Unconjugated	50 µl
GTX634347	Capture Antibody	Mouse	Unconjugated	50 µl

APPLICATION

Application Note

*Optimal dilutions/concentrations should be determined by the researcher.

Suggested dilution	Recommended dilution
ELISA	1:1000-1:10000
Sandwich ELISA	Assay dependent

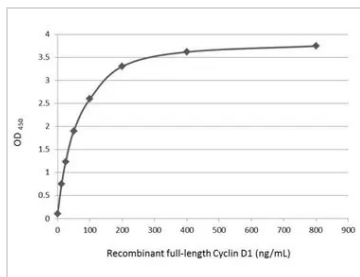
Not tested in other applications.

PROPERTIES

Form	Liquid
Storage	Store as concentrated solution. Centrifuge briefly prior to opening vial. For short-term storage (1-2 weeks), store at 4°C. For long-term storage, aliquot and store at -20°C or below. Avoid multiple freeze-thaw cycles.
Note	<p>For laboratory research use only. Not for any clinical, therapeutic, or diagnostic use in humans or animals. Not for animal or human consumption.</p> <p>Purchasers shall not, and agree not to enable third parties to, analyze, copy, reverse engineer or otherwise attempt to determine the structure or sequence of the product.</p>



For full product information, images and publications, please visit our [website](#).

DATA IMAGES

GTX500039 ELISA Image

Sandwich ELISA detection of recombinant full-length Cyclin D1 protein using GTX634347 as capture antibody at concentration of 5 µg/mL and GTX108624 as detection antibody at concentration of 1 µg/mL. Rabbit IgG antibody (HRP) (GTX213110-01) was diluted at 1:10000 and used to detect the primary antibody.



For full product information, images and publications, please visit our [website](https://www.genetex.com).