

SARS-CoV-2 (COVID-19) Nucleocapsid ELISA Pair [HL5511 / HL448]

Cat. No. GTX500045

Applications	ELISA, Sandwich ELISA
Reactivity	SARS Coronavirus 2

Package
1 pair

PRODUCT

Product Content

Cat No.	Type	Host	Conjugation	Package
GTX635686-01	Detection Antibody	Rabbit	HRP	50µl
GTX635689	Capture Antibody	Rabbit	Unconjugated	100µl

Applications

Application Note

*Optimal dilutions/concentrations should be determined by the researcher.

Suggested dilution	Recommended dilution
ELISA	Assay dependent
Sandwich ELISA	Assay dependent

Not tested in other applications.

Product Note This ELISA pair is able to detect multiple SARS-CoV-2 VOCs, including Omicron variant.

Properties

Form Liquid

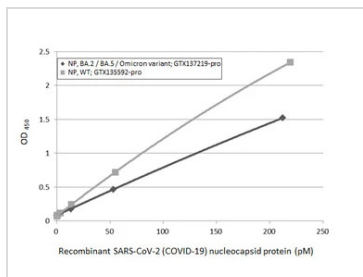
Storage Store as concentrated solution. Centrifuge briefly prior to opening vial. For short-term storage (1-2 weeks), store at 4°C. For long-term storage, aliquot and store at -20°C or below. Avoid multiple freeze-thaw cycles.

Note For *In vitro* laboratory use only. Not for any clinical, therapeutic, or diagnostic use in humans or animals. Not for animal or human consumption.



For full product information, images and publications, please visit our [website](#).

DATA IMAGES

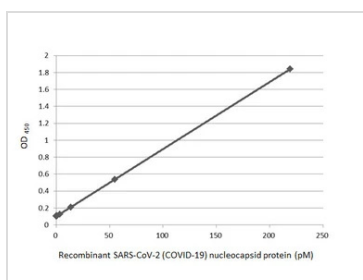


GTX500045 ELISA Image

Sandwich ELISA detection of recombinant nucleocapsid protein(s) derived from different strains of SARS-CoV-2 virus (ie., Wild type; BA.2 / BA.5 Omicron variant) using antibodies as below.

Capture: SARS-CoV-2 (COVID-19) nucleocapsid antibody [HL511] (GTX635689) (5 µg/mL)

Detection: SARS-CoV-2 (COVID-19) nucleocapsid antibody [HL448] (HRP) (GTX635686-01) (1 µg/mL)

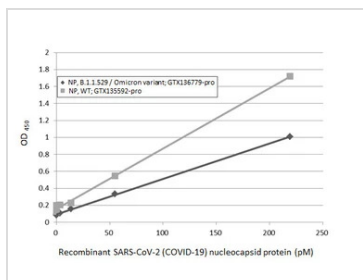


GTX500045 ELISA Image

Sandwich ELISA detection of recombinant SARS-CoV-2 Nucleocapsid protein (D63G, R203M, D377Y, R385K), His Tag (delta variant) using antibodies as below.

Capture: SARS-CoV-2 (COVID-19) nucleocapsid antibody [HL511] (GTX635689) (5 µg/mL)

Detection: SARS-CoV-2 (COVID-19) nucleocapsid antibody [HL448] (HRP) (GTX635686-01) (1 µg/mL)

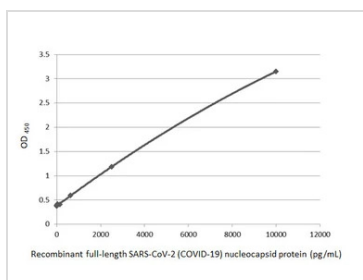


GTX500045 ELISA Image

Sandwich ELISA detection of recombinant nucleocapsid protein(s) derived from different strains of SARS-CoV-2 virus (ie., Wild type; B.1.1.529 Omicron variant) using antibodies as below.

Capture: SARS-CoV-2 (COVID-19) nucleocapsid antibody [HL511] (GTX635689) (5 µg/mL)

Detection: SARS-CoV-2 (COVID-19) nucleocapsid antibody [HL448] (HRP) (GTX635686-01) (1 µg/mL)



GTX500045 ELISA Image

Sandwich ELISA detection of recombinant full-length SARS-CoV-2 (COVID-19) nucleocapsid protein, His tag protein (GTX135592-pro) using SARS-CoV-2 (COVID-19) nucleocapsid antibody [HL511] (GTX635689) as capture antibody at concentration of 5 µg/mL and HRP-conjugated SARS-CoV-2 (COVID-19) nucleocapsid antibody [HL448] (GTX635686-01) as detection antibody at concentration of 1 µg/mL. Sensitivity : 39.06 pg/mL



For full product information, images and publications, please visit our [website](#).