

SARS-CoV-2 (COVID-19) Spike RBD ELISA Pair [HL1014 / HL1003]

Cat. No. GTX500046**Applications** ELISA, Sandwich ELISA**Reactivity** SARS Coronavirus 2**Package**

1 pair

PRODUCT

Product Content

Cat No.	Type	Host	Conjugation	Package
GTX635792-01	Detection Antibody	Rabbit	HRP	50µl
GTX635807	Capture Antibody	Rabbit	Unconjugated	100µl

Applications

Application Note

*Optimal dilutions/concentrations should be determined by the researcher.

Suggested dilution	Recommended dilution
ELISA	Assay dependent
Sandwich ELISA	Assay dependent

Not tested in other applications.

Product Note

This ELISA pair detects SARS-CoV-2 Spike protein, but does not cross-react with SARS-CoV or MERS-CoV spike proteins based on our internal testing. This ELISA pair is able to detect multiple SARS-CoV-2 VOCs, including Omicron variants (BA.1 and BA.2).

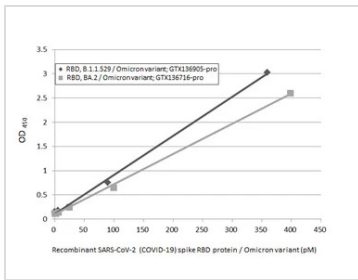
Properties

Form	Liquid
Storage	Store as concentrated solution. Centrifuge briefly prior to opening vial. For short-term storage (1-2 weeks), store at 4°C. For long-term storage, aliquot and store at -20°C or below. Avoid multiple freeze-thaw cycles.
Note	For <i>In vitro</i> laboratory use only. Not for any clinical, therapeutic, or diagnostic use in humans or animals. Not for animal or human consumption.



For full product information, images and publications, please visit our [website](#).

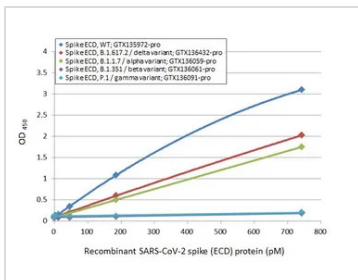
Date 2025 / 04 / 28 Page 1 of 2

DATA IMAGES

GTx500046 ELISA Image

Sandwich ELISA detection of recombinant Spike RBD Protein(s) derived from different strains of SARS-CoV-2 virus (ie., B.1.1.529 Omicron variant; BA.2 Omicron variant) using antibodies as below.

Capture: SARS-CoV-2 (COVID-19) Spike RBD antibody [HL1014] (GTx635807) (5 µg/mL)

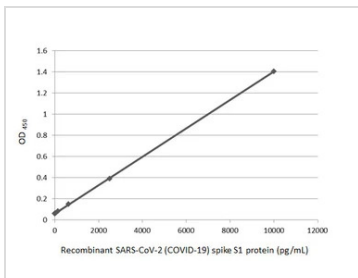
Detection: SARS-CoV-2 (COVID-19) Spike RBD antibody [HL1003] (HRP) (GTx635792-01) (1 µg/mL)


GTx500046 ELISA Image

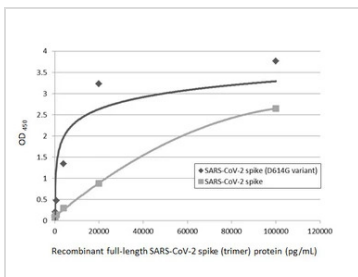
Sandwich ELISA detection of recombinant Spike ECD protein(s) derived from different strains of SARS-CoV-2 virus (ie., Wild type; B.1.1.7 alpha variant; B.1.351 beta variant; P.1 gamma variant; B.1.617.2 delta variant) using antibodies as below.

Capture: SARS-CoV-2 (COVID-19) Spike RBD antibody [HL1014] (GTx635807) (5 µg/mL)

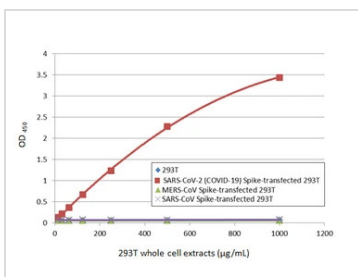
Detection: SARS-CoV-2 (COVID-19) Spike RBD antibody [HL1003] (HRP) (GTx635792-01) (1 µg/mL)


GTx500046 ELISA Image

Sandwich ELISA detection of recombinant SARS-CoV-2 (COVID-19) Spike S1 protein, His tag (active) protein (GTx135817-pro) using SARS-CoV-2 (COVID-19) Spike RBD antibody [HL1014] (GTx635807) as capture antibody at concentration of 5 µg/mL and HRP-conjugated SARS-CoV-2 (COVID-19) Spike RBD antibody [HL1003] (GTx635792-01) as detection antibody at concentration of 1 µg/mL.


GTx500046 ELISA Image

Sandwich ELISA detection of recombinant SARS-CoV-2 (COVID-19) Spike (D614G variant) protein, His tag (active) (GTx02575-pro), and SARS-CoV-2 spike (trimer) protein using SARS-CoV-2 (COVID-19) Spike RBD antibody [HL1014] (GTx635807) as capture antibody at concentration of 5 µg/mL and SARS-CoV-2 (COVID-19) Spike RBD antibody [HL1003] (HRP) (GTx635792-01) as detection antibody at concentration of 1 µg/mL.


GTx500046 ELISA Image

Sandwich ELISA detection of non-transfected (GTx535673) and SARS-CoV-2 (COVID-19) Spike (GTx535664), MERS-CoV Spike (GTx535667), or SARS-CoV Spike (GTx535668) transfected 293T whole cell extracts using SARS-CoV-2 (COVID-19) Spike RBD antibody [HL1014] (GTx635807) as capture antibody at concentration of 5 µg/mL and SARS-CoV-2 (COVID-19) Spike RBD antibody [HL1003] (HRP) (GTx635792-01) as detection antibody at concentration of 1 µg/mL.



For full product information, images and publications, please visit our [website](https://www.genetex.com).