

# CRABP1 antibody [AT1A1]

**Cat. No. GTX50013**

<b>Host</b>	Mouse
<b>Clonality</b>	Monoclonal
<b>Isotype</b>	IgG2b
<b>Applications</b>	WB, ICC/IF, FCM, ELISA
<b>Reactivity</b>	Human, Mouse

**Package**  
100 µl

## Applications

### Application Note

**We recommend the following starting dilutions:**

Western Blot: Use at 1:500 ~ 1000.

Optimal working concentrations should be determined experimentally by the end user.

**Calculated MW** 16 kDa. ( [Note](#) )

## Properties

<b>Form</b>	Liquid
<b>Buffer</b>	PBS
<b>Preservative</b>	0.1% Sodium azide
<b>Storage</b>	Store as concentrated solution. Centrifuge briefly prior to opening vial. For short-term storage (1-2 weeks), store at 4°C. For long-term storage, aliquot and store at -20°C or below. Avoid multiple freeze-thaw cycles.
<b>Concentration</b>	1 mg/ml (Please refer to the vial label for the specific concentration.)
<b>Immunogen</b>	Recombinant human CRABP1 (1-137aa) purified from E. coli
<b>Purification</b>	By protein-G affinity chromatography
<b>Conjugation</b>	Unconjugated

### Note

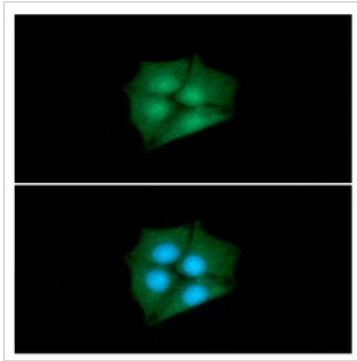
For laboratory research use only. Not for any clinical, therapeutic, or diagnostic use in humans or animals. Not for animal or human consumption.

Purchasers shall not, and agree not to enable third parties to, analyze, copy, reverse engineer or otherwise attempt to determine the structure or sequence of the product.



For full product information, images and publications, please visit our [website](#).

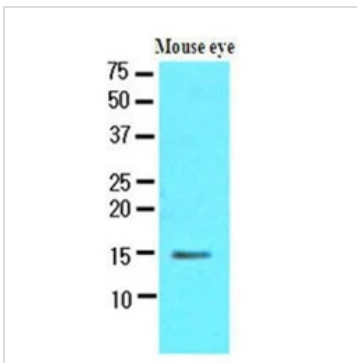
## DATA IMAGES



### GTX50013 ICC/IF Image

ICC/IF analysis of 3T3 cells using GTX50013 CRABP1 antibody [AT1A1].

Dilution : 1:100

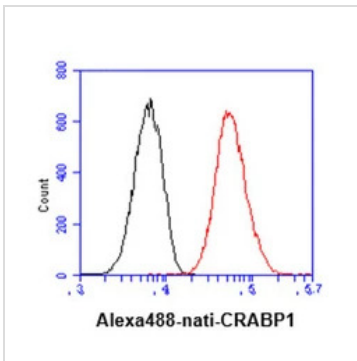


### GTX50013 WB Image

WB analysis of mouse eye tissue lysate using GTX50013 CRABP1 antibody [AT1A1].

Loading : 30 µg

Dilution : 1:500

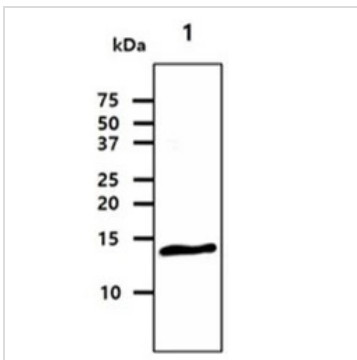


### GTX50013 FCM Image

FACS analysis of 3T3 cells using GTX50013 CRABP1 antibody [AT1A1].

Red : Primary antibody

Black : Isotype control



### GTX50013 WB Image

WB analysis of cell lysate using GTX50013 CRABP1 antibody [AT1A1].

Lane 1 : MCF-7

Loading : 40 µg

Dilution : 1:500



For full product information, images and publications, please visit our [website](https://www.genetex.com).