

GAS7 antibody [AT4H8]

Cat. No. GTX50021

Host	Mouse
Clonality	Monoclonal
Isotype	IgG1
Applications	WB, ELISA
Reactivity	Human, Mouse

Package
100 µl

Applications

Application Note

We recommend the following starting dilutions:

Western Blot: Use at 1:500 ~ 1000.

Optimal working concentrations should be determined experimentally by the end user.

Calculated MW 54 kDa. ([Note](#))

Properties

Form	Liquid
Buffer	PBS
Preservative	0.1% Sodium azide
Storage	Store as concentrated solution. Centrifuge briefly prior to opening vial. For short-term storage (1-2 weeks), store at 4°C. For long-term storage, aliquot and store at -20°C or below. Avoid multiple freeze-thaw cycles.
Concentration	1 mg/ml (Please refer to the vial label for the specific concentration.)
Immunogen	Recombinant human GAS7 (1-416aa) purified from E. coli
Purification	By protein-G affinity chromatography
Conjugation	Unconjugated

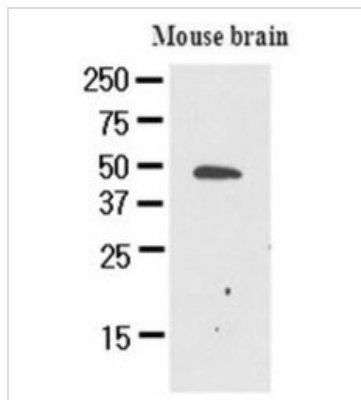
Note

For laboratory research use only. Not for any clinical, therapeutic, or diagnostic use in humans or animals. Not for animal or human consumption.

Purchasers shall not, and agree not to enable third parties to, analyze, copy, reverse engineer or otherwise attempt to determine the structure or sequence of the product.

For full product information, images and publications, please visit our [website](#).

DATA IMAGES



GTX50021 WB Image

The extracts of mouse brain (50ug) were resolved by SDS-PAGE, transferred to NC membrane and probed with anti-human GAS7 (1:500). Proteins were visualized using a goat anti-mouse secondary antibody conjugated to HRP and an ECL detection system.



For full product information, images and publications, please visit our [website](https://www.genetex.com).