

Podoplanin antibody [5E2]

Cat. No. GTX50043

Host	Mouse
Clonality	Monoclonal
Isotype	IgG2b
Application	ICC/IF, IHC-P, IHC-Fr, FACS, ELISA
Reactivity	Human, Mouse

Reference (2)
Package
100 µl

APPLICATION

Application Note

*Optimal dilutions/concentrations should be determined by the researcher.

Suggested dilution	Recommended dilution
ICC/IF	1:100
IHC-P	Assay dependent
IHC-Fr	Assay dependent
FACS	2-5 µg
ELISA	Assay dependent

Note : for 1x10⁶ cells

Not tested in other applications.

Calculated MW 17 kDa. ([Note](#))

PROPERTIES

Form	Liquid
Buffer	PBS
Preservative	0.1% Sodium azide
Storage	Store as concentrated solution. Centrifuge briefly prior to opening vial. For short-term storage (1-2 weeks), store at 4°C. For long-term storage, aliquot and store at -20°C or below. Avoid multiple freeze-thaw cycles.
Concentration	1 mg/ml (Please refer to the vial label for the specific concentration.)
Immunogen	Recombinant human PDPN (Podoplanin) (1-206aa) purified from E. coli
Purification	By protein-G affinity chromatography
Conjugation	Unconjugated

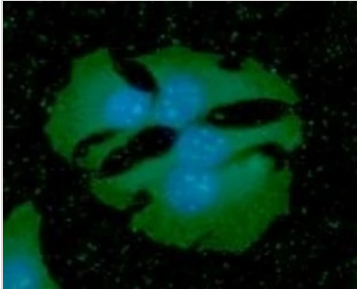


For full product information, images and publications, please visit our [website](#).

For laboratory research use only. Not for any clinical, therapeutic, or diagnostic use in humans or animals. Not for animal or human consumption.

Note

Purchasers shall not, and agree not to enable third parties to, analyze, copy, reverse engineer or otherwise attempt to determine the structure or sequence of the product.

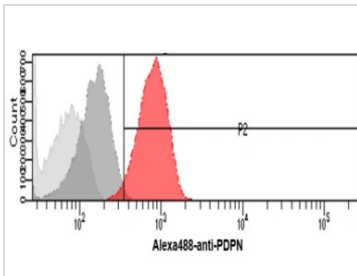
DATA IMAGES

GTX50043 ICC/IF Image

ICC/IF analysis of HeLa cells using GTX50043 PDPN antibody [5E2].

Green : PDPN

Blue : cell nucleus

Dilution : 1:100


GTX50043 FACS Image

FACS analysis of HeLa cells using GTX50043 PDPN antibody [5E2].

Red : PDPN

Dark gray : Isotype control

Light gray : Negative control, without primary and secondary antibody incubation



For full product information, images and publications, please visit our [website](https://www.genetex.com).