

PD1 antibody [4F12]

Cat. No. GTX50053

Host	Mouse
Clonality	Monoclonal
Isotype	IgG2b
Applications	WB, ICC/IF, FCM, ELISA
Reactivity	Human

Package
100 µl

Applications

Application Note

We recommend the following starting dilutions:

Western Blot: Use at 1:500 ~ 1,000.

Optimal working concentrations should be determined experimentally by the end user.

Calculated MW 32 kDa. ([Note](#))

Properties

Form	Liquid
Buffer	PBS
Preservative	0.1% Sodium azide
Storage	Store as concentrated solution. Centrifuge briefly prior to opening vial. For short-term storage (1-2 weeks), store at 4°C. For long-term storage, aliquot and store at -20°C or below. Avoid multiple freeze-thaw cycles.
Concentration	1 mg/ml (Please refer to the vial label for the specific concentration.)
Immunogen	Recombinant human PDCD1 (21-167aa) purified from E. coli
Purification	By protein-G affinity chromatography
Conjugation	Unconjugated

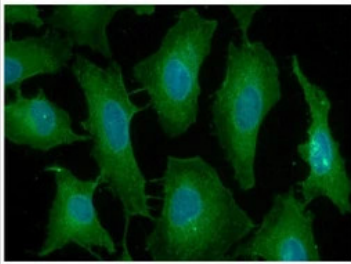
Note

For laboratory research use only. Not for any clinical, therapeutic, or diagnostic use in humans or animals. Not for animal or human consumption.

Purchasers shall not, and agree not to enable third parties to, analyze, copy, reverse engineer or otherwise attempt to determine the structure or sequence of the product.



For full product information, images and publications, please visit our [website](#).

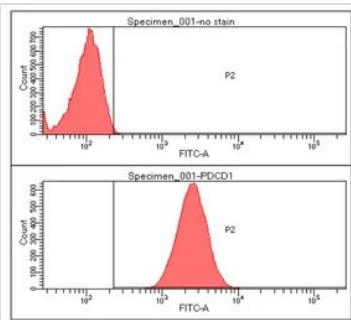
DATA IMAGES

GTX50053 ICC/IF Image

ICC/IF analysis of HeLa cells using GTX50053 PD1 antibody [4F12].

Green : Primary antibody

Blue : cell nucleus

Dilution : 1:100

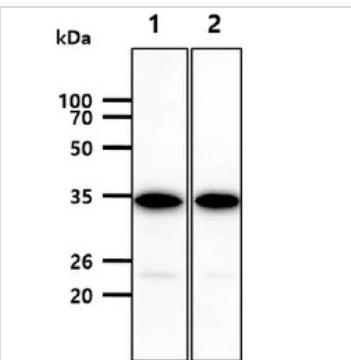

GTX50053 FCM Image

FACS analysis of HeLa cells using GTX50053 PD1 antibody [4F12].

Red : Primary antibody

Black : Isotype control

Dilution : 2-5µg for 1x10⁶ cells


GTX50053 WB Image

WB analysis of various cell lysate using GTX50053 PD1 antibody [4F12].

Lane 1 : 293T cell lysate

Lane 2 : Raji cell lysate

Dilution : 1:3000

Loading : 40µg



For full product information, images and publications, please visit our [website](https://www.genetex.com).