

ATF2 (phospho Thr69) antibody

Cat. No. GTX50108

Host	Rabbit
Clonality	Polyclonal
Isotype	IgG
Applications	WB, ICC/IF, IHC-P
Reactivity	Human, Mouse

Package
100 µl

Applications

Application Note

*Optimal dilutions/concentrations should be determined by the researcher.

Suggested dilution	Recommended dilution
WB	1:500
ICC/IF	1:100-1:200
IHC-P	1:50-1:100

Not tested in other applications.

Calculated MW 55 kDa. ([Note](#))

Product Note This antibody is raised against human ATF2 phosphorylated at Thr69. Based on sequence homology, it is predicted to react with mouse/rat ATF2 when phosphorylated at the corresponding residues - ATF2 Thr51.

Properties

Form	Liquid
Buffer	PBS, 150mM NaCl, 50% Glycerol
Preservative	0.02% Sodium azide
Storage	Store as concentrated solution. Centrifuge briefly prior to opening vial. For short-term storage (1-2 weeks), store at 4°C. For long-term storage, aliquot and store at -20°C or below. Avoid multiple freeze-thaw cycles.
Concentration	1 mg/ml (Please refer to the vial label for the specific concentration.)
Immunogen	Peptide sequence around phosphorylation site of threonine 69 (D-Q-T(p)-P-T) derived from human ATF2.
Purification	Purified by antigen-affinity chromatography. Non-phospho specific antibodies were removed by chromatography using non-phosphopeptide.
Conjugation	Unconjugated

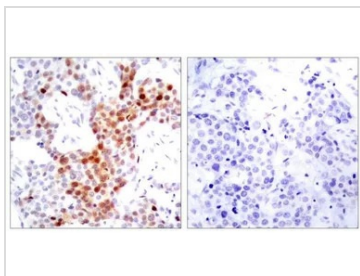


For full product information, images and publications, please visit our [website](#).

For laboratory research use only. Not for any clinical, therapeutic, or diagnostic use in humans or animals. Not for animal or human consumption.

Note

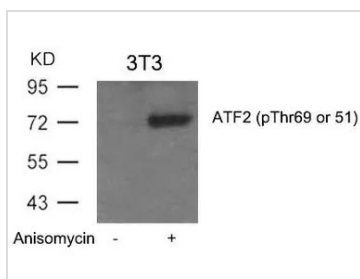
Purchasers shall not, and agree not to enable third parties to, analyze, copy, reverse engineer or otherwise attempt to determine the structure or sequence of the product.

DATA IMAGES

GTX50108 IHC-P Image

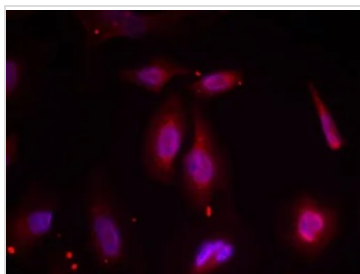
IHC-P analysis of human breast carcinoma tissue using GTX50108 ATF2 (phospho Thr69) antibody.

Left : Primary antibody

Right : Primary antibody pre-incubated with the antigen specific peptide


GTX50108 WB Image

WB analysis of extracts from 3T3 cells untreated or treated with Anisomycin using GTX50108 ATF2 (phospho Thr69) antibody.


GTX50108 ICC/IF Image

ICC/IF analysis of methanol-fixed HeLa cells using GTX50108 ATF2 (phospho Thr69) antibody.



For full product information, images and publications, please visit our [website](https://www.genetex.com).