

## ATF2 (phospho Thr73) antibody

**Cat. No. GTX50110**

<b>Host</b>	Rabbit
<b>Clonality</b>	Polyclonal
<b>Isotype</b>	IgG
<b>Applications</b>	WB, ICC/IF, IHC-P
<b>Reactivity</b>	Human, Monkey

**Package**  
100 µl

## Applications

**Application Note**

\*Optimal dilutions/concentrations should be determined by the researcher.

Suggested dilution	Recommended dilution
WB	1:500-1:1000
ICC/IF	1:100-1:200
IHC-P	1:50-1:100

Not tested in other applications.

**Calculated MW** 55 kDa. ([Note](#))

**Product Note**

This antibody is raised against human ATF2 phosphorylated at Thr73. Based on sequence homology, it is predicted to react with mouse/rat ATF2 when phosphorylated at the corresponding residues - ATF2 Thr55.

## Properties

<b>Form</b>	Liquid
<b>Buffer</b>	PBS, 150mM NaCl, 50% Glycerol
<b>Preservative</b>	0.02% Sodium azide
<b>Storage</b>	Store as concentrated solution. Centrifuge briefly prior to opening vial. For short-term storage (1-2 weeks), store at 4°C. For long-term storage, aliquot and store at -20°C or below. Avoid multiple freeze-thaw cycles.
<b>Concentration</b>	1 mg/ml (Please refer to the vial label for the specific concentration.)
<b>Immunogen</b>	Peptide sequence around phosphorylation site of threonine 73 (T-P-T(p)-R-F) derived from human ATF2.
<b>Purification</b>	Purified by antigen-affinity chromatography. Non-phospho specific antibodies were removed by chromatography using non-phosphopeptide.
<b>Conjugation</b>	Unconjugated



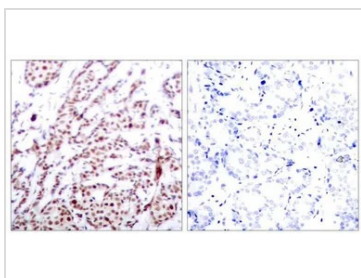
For full product information, images and publications, please visit our [website](#).

For laboratory research use only. Not for any clinical, therapeutic, or diagnostic use in humans or animals. Not for animal or human consumption.

**Note**

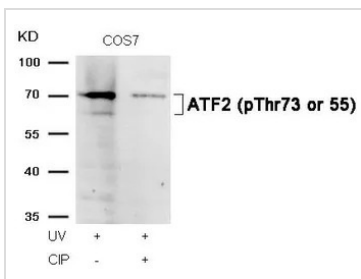
Purchasers shall not, and agree not to enable third parties to, analyze, copy, reverse engineer or otherwise attempt to determine the structure or sequence of the product.

DATA IMAGES



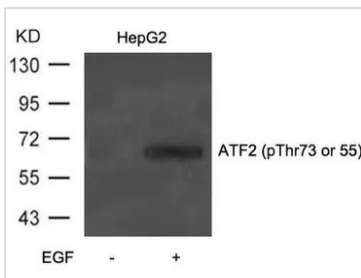
**GTX50110 IHC-P Image**

IHC-P analysis of human breast carcinoma tissue using GTX50110 ATF2 (phospho Thr73) antibody.  
 Left : Primary antibody  
 Right : Primary antibody pre-incubated with the antigen specific peptide



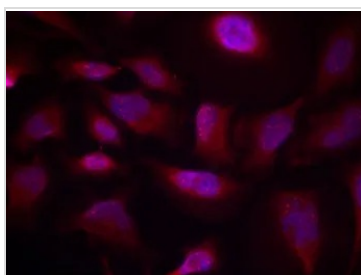
**GTX50110 WB Image**

WB analysis of extracts from COS-7 cells treated with UV or calf intestinal phosphatase (CIP) using GTX50110 ATF2 (phospho Thr73) antibody.



**GTX50110 WB Image**

WB analysis of extracts from HepG2 cells untreated or treated with EGF using GTX50110 ATF2 (phospho Thr73) antibody.



**GTX50110 ICC/IF Image**

ICC/IF analysis of methanol-fixed HeLa cells using GTX50110 ATF2 (phospho Thr73) antibody.



For full product information, images and publications, please visit our [website](#).