

AKT (phospho Ser473) antibody

Cat. No. GTX50128

Host	Rabbit
Clonality	Polyclonal
Isotype	IgG
Application	WB, IHC-P
Reactivity	Human, Mouse, Rat, Monkey

Reference (8)

Package

100 µl

APPLICATION

Application Note

*Optimal dilutions/concentrations should be determined by the researcher.

Suggested dilution	Recommended dilution
WB	1:500-1:1000
IHC-P	1:50-1:100

Not tested in other applications.

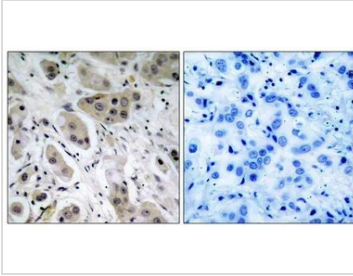
PROPERTIES

Form	Liquid
Buffer	PBS (without Mg ²⁺ and Ca ²⁺) pH7.4, 150mM NaCl, 50% Glycerol
Preservative	0.02% Sodium azide
Storage	Store as concentrated solution. Centrifuge briefly prior to opening vial. For short-term storage (1-2 weeks), store at 4°C. For long-term storage, aliquot and store at -20°C or below. Avoid multiple freeze-thaw cycles.
Concentration	1 mg/ml (Please refer to the vial label for the specific concentration.)
Immunogen	Peptide sequence around phosphorylation site of serine 473 (Q-F-S(p)-Y-S) derived from human AKT.
Purification	Purified by antigen-affinity chromatography. Non-phospho specific antibodies were removed by chromatography using non-phosphopeptide.
Conjugation	Unconjugated
Note	<p>For laboratory research use only. Not for any clinical, therapeutic, or diagnostic use in humans or animals. Not for animal or human consumption.</p> <p>Purchasers shall not, and agree not to enable third parties to, analyze, copy, reverse engineer or otherwise attempt to determine the structure or sequence of the product.</p>



For full product information, images and publications, please visit our [website](#).

DATA IMAGES

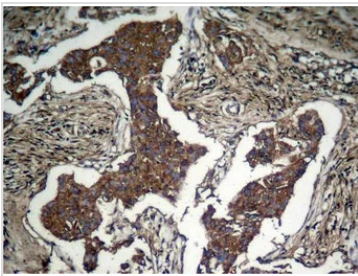


GTX50128 IHC-P Image

IHC-P analysis of human breast carcinoma tissue using GTX50128 AKT (phospho Ser473) antibody.

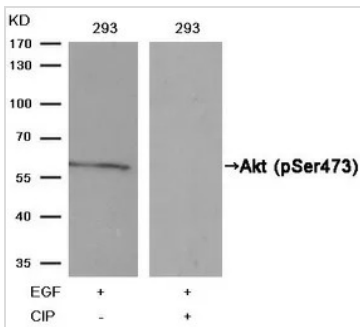
Left : Primary antibody

Right : Primary antibody pre-incubated with the antigen specific peptide



GTX50128 IHC-P Image

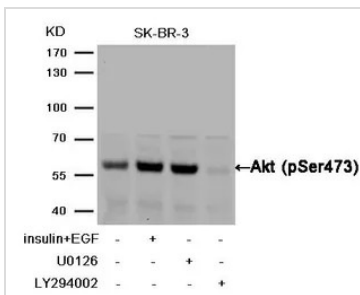
IHC-P analysis of human lung carcinoma tissue using GTX50128 AKT (phospho Ser473) antibody.



GTX50128 WB Image

WB analysis of extracts from 293 cells treated with EGF or calf intestinal phosphatase (CIP) using GTX50128

AKT (phospho Ser473) antibody.



GTX50128 WB Image

WB analysis of extracts from SK-BR-3 cells untreated, treated with insulin + EGF, U0126, or LY294002 using

GTX50128 AKT (phospho Ser473) antibody.



For full product information, images and publications, please visit our [website](https://www.genetex.com).