

Her2 / ErbB2 (phospho Tyr1221/Tyr1222) antibody

Cat. No. GTX50143

Host	Rabbit
Clonality	Polyclonal
Isotype	IgG
Applications	WB, ICC/IF
Reactivity	Human

Package
100 µl

Applications

Application Note

*Optimal dilutions/concentrations should be determined by the researcher.

Suggested dilution	Recommended dilution
WB	1:500-1:1000
ICC/IF	1:100-1:200

Not tested in other applications.

Calculated MW 138 kDa. ([Note](#))

Properties

Form	Liquid
Buffer	PBS, 150mM NaCl, 50% Glycerol
Preservative	0.02% Sodium azide
Storage	Store as concentrated solution. Centrifuge briefly prior to opening vial. For short-term storage (1-2 weeks), store at 4°C. For long-term storage, aliquot and store at -20°C or below. Avoid multiple freeze-thaw cycles.
Concentration	1 mg/ml (Please refer to the vial label for the specific concentration.)
Immunogen	Peptide sequence around phosphorylation site of tyrosine1221/1222 (N-L-Y(p)-Y(p)-W) derived from human Her2 / ErbB2.
Purification	Purified by antigen-affinity chromatography. Non-phospho specific antibodies were removed by chromatography using non-phosphopeptide.
Conjugation	Unconjugated

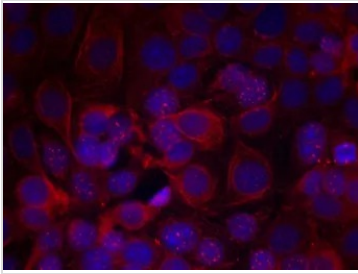
Note

For laboratory research use only. Not for any clinical, therapeutic, or diagnostic use in humans or animals. Not for animal or human consumption.

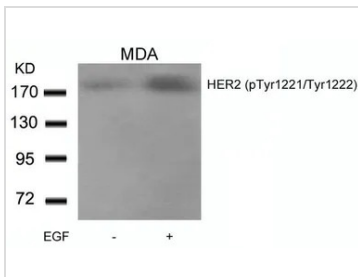
Purchasers shall not, and agree not to enable third parties to, analyze, copy, reverse engineer or otherwise attempt to determine the structure or sequence of the product.



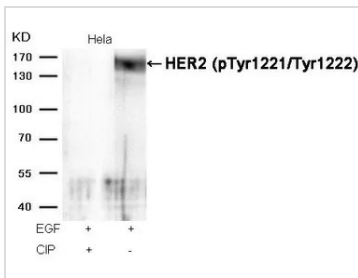
For full product information, images and publications, please visit our [website](#).

DATA IMAGES

GTX50143 ICC/IF Image

ICC/IF analysis of methanol-fixed MCF cells using GTX50143 Her2 / ErbB2 (phospho Tyr1221/Tyr1222) antibody.


GTX50143 WB Image

WB analysis of extracts from MDA cells untreated or treated with EGF using GTX50143 Her2 / ErbB2 (phospho Tyr1221/Tyr1222) antibody.


GTX50143 WB Image

WB analysis of extracts from HeLa cells treated with EGF or calf intestinal phosphatase (CIP) using GTX50143 Her2 / ErbB2 (phospho Tyr1221/Tyr1222) antibody.



For full product information, images and publications, please visit our [website](https://www.genetex.com).