

## ICAM1 / CD54 (phospho Tyr512) antibody

**Cat. No. GTX50150**

<b>Host</b>	Rabbit
<b>Clonality</b>	Polyclonal
<b>Isotype</b>	IgG
<b>Applications</b>	WB
<b>Reactivity</b>	Human, Mouse

**Package**  
100 µl

## Applications

**Application Note**

\*Optimal dilutions/concentrations should be determined by the researcher.

Suggested dilution	Recommended dilution
--------------------	----------------------

WB	1:500-1:1000
----	--------------

Not tested in other applications.

<b>Calculated MW</b>	58 kDa. ( <a href="#">Note</a> )
----------------------	----------------------------------

<b>Observed MW (kDa)</b>	58 or 85~110 kDa. The observed M.W. is based on the following publication. PMID: 24474243
--------------------------	---

## Properties

<b>Form</b>	Liquid
-------------	--------

<b>Buffer</b>	PBS, 150mM NaCl, 50% Glycerol
---------------	-------------------------------

<b>Preservative</b>	0.02% Sodium azide
---------------------	--------------------

<b>Storage</b>	Store as concentrated solution. Centrifuge briefly prior to opening vial. For short-term storage (1-2 weeks), store at 4°C. For long-term storage, aliquot and store at -20°C or below. Avoid multiple freeze-thaw cycles.
----------------	--

<b>Concentration</b>	1 mg/ml (Please refer to the vial label for the specific concentration.)
----------------------	--

<b>Immunogen</b>	Peptide sequence around phosphorylation site of tyrosine 512 (K-K-Y(p)-R-L) derived from human ICAM1 / CD54.
------------------	--

<b>Purification</b>	Purified by antigen-affinity chromatography. Non-phospho specific antibodies were removed by chromatography using non-phosphopeptide.
---------------------	---

<b>Conjugation</b>	Unconjugated
--------------------	--------------

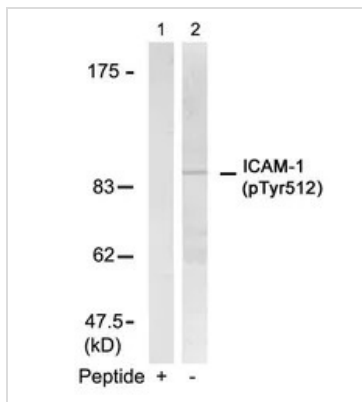
**Note**

For laboratory research use only. Not for any clinical, therapeutic, or diagnostic use in humans or animals. Not for animal or human consumption.

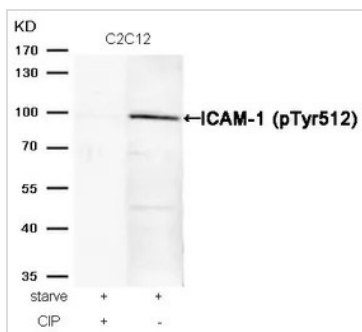
Purchasers shall not, and agree not to enable third parties to, analyze, copy, reverse engineer or otherwise attempt to determine the structure or sequence of the product.



For full product information, images and publications, please visit our [website](#).

**DATA IMAGES**

**GTX50150 WB Image**

WB analysis of extracts from HUVEC cells using GTX50150 ICAM1 / CD54 (phospho Tyr512) antibody.  
Lane 1 : Primary antibody pre-incubated with the antigen specific peptide


**GTX50150 WB Image**

WB analysis of extracts from C2C12 cells treated with starvation or calf intestinal phosphatase (CIP) using GTX50150 ICAM1 / CD54 (phospho Tyr512) antibody.



For full product information, images and publications, please visit our [website](#).