

VEGF Receptor 2 (phospho Tyr1214) antibody

Cat. No. GTX50152

| | |
|--------------------|-------------------|
| Host | Rabbit |
| Clonality | Polyclonal |
| Isotype | IgG |
| Application | WB, ICC/IF, IHC-P |
| Reactivity | Human |

Package
100 µl

APPLICATION

Application Note

*Optimal dilutions/concentrations should be determined by the researcher.

| Suggested dilution | Recommended dilution |
|--------------------|----------------------|
| WB | 1:500-1:1000 |
| ICC/IF | 1:100-1:200 |
| IHC-P | 1:50-1:100 |

Not tested in other applications.

Calculated MW 152 kDa. ([Note](#))

PROPERTIES

| | |
|----------------------|--|
| Form | Liquid |
| Buffer | PBS (without Mg ²⁺ and Ca ²⁺) pH7.4, 150mM NaCl, 50% Glycerol |
| Preservative | 0.02% Sodium azide |
| Storage | Store as concentrated solution. Centrifuge briefly prior to opening vial. For short-term storage (1-2 weeks), store at 4°C. For long-term storage, aliquot and store at -20°C or below. Avoid multiple freeze-thaw cycles. |
| Concentration | 1 mg/ml (Please refer to the vial label for the specific concentration.) |
| Immunogen | Peptide sequence around phosphorylation site of tyrosine 1214 (F-H-Y(p)-D-N) derived from human VEGF Receptor 2. |
| Purification | Purified by antigen-affinity chromatography. Non-phospho specific antibodies were removed by chromatography using non-phosphopeptide. |
| Conjugation | Unconjugated |

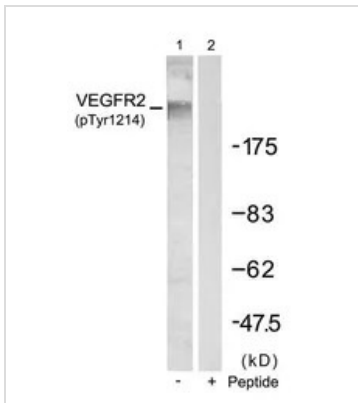
Note For laboratory research use only. Not for any clinical, therapeutic, or diagnostic use in humans or animals. Not for animal or human consumption.

Purchasers shall not, and agree not to enable third parties to, analyze, copy, reverse engineer or otherwise attempt to determine the structure or sequence of the product.



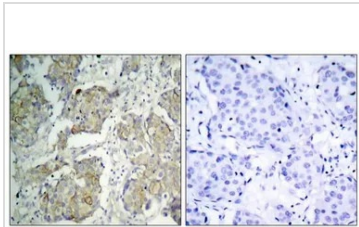
For full product information, images and publications, please visit our [website](#).

DATA IMAGES



GTX50152 WB Image

WB analysis of extracts from SKOV3 cells using GTX50152 VEGF Receptor 2 (phospho Tyr1214) antibody.
Lane 2 : Primary antibody pre-incubated with the antigen specific peptide

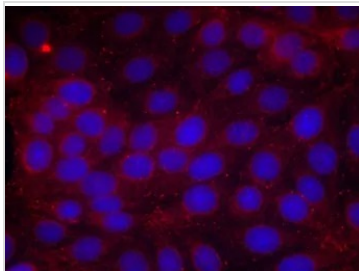


GTX50152 IHC-P Image

IHC-P analysis of human breast carcinoma tissue using GTX50152 VEGF Receptor 2 (phospho Tyr1214) antibody.

Left : Primary antibody

Right : Primary antibody pre-incubated with the antigen specific peptide



GTX50152 ICC/IF Image

ICC/IF analysis of methanol-fixed MCF cells using GTX50152 VEGF Receptor 2 (phospho Tyr1214) antibody.



For full product information, images and publications, please visit our [website](https://www.genetex.com).