

LIM kinase 2 (phospho Thr505) antibody

Cat. No. GTX50188

Host	Rabbit
Clonality	Polyclonal
Isotype	IgG
Applications	WB, ICC/IF, IHC-P
Reactivity	Human

References (1)

Package

100 µl

Applications

Application Note

*Optimal dilutions/concentrations should be determined by the researcher.

Suggested dilution	Recommended dilution
WB	1:500-1:1000
ICC/IF	1:100-1:200
IHC-P	1:50-1:100

Not tested in other applications.

Calculated MW 72 kDa. ([Note](#))

Properties

Form	Liquid
Buffer	PBS, 150mM NaCl, 50% Glycerol
Preservative	0.02% Sodium azide
Storage	Store as concentrated solution. Centrifuge briefly prior to opening vial. For short-term storage (1-2 weeks), store at 4°C. For long-term storage, aliquot and store at -20°C or below. Avoid multiple freeze-thaw cycles.
Concentration	1 mg/ml (Please refer to the vial label for the specific concentration.)
Immunogen	Peptide sequence around phosphorylation site of threonine 505 (R-Y-T(p)-V-V) derived from human LIM kinase 2.
Purification	Purified by antigen-affinity chromatography. Non-phospho specific antibodies were removed by chromatography using non-phosphopeptide.
Conjugation	Unconjugated

Note

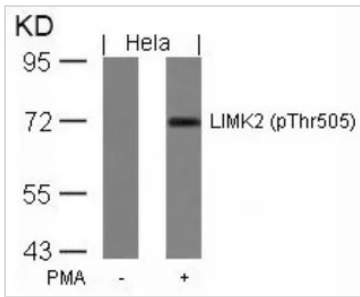
For laboratory research use only. Not for any clinical, therapeutic, or diagnostic use in humans or animals. Not for animal or human consumption.

Purchasers shall not, and agree not to enable third parties to, analyze, copy, reverse engineer or otherwise attempt to determine the structure or sequence of the product.



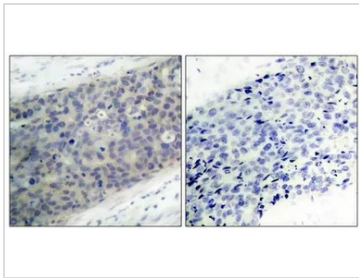
For full product information, images and publications, please visit our [website](#).

DATA IMAGES



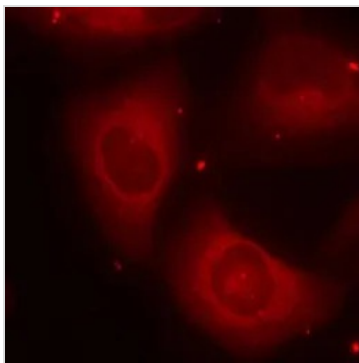
GTX50188 WB Image

WB analysis of extracts from HeLa cells untreated or treated with PMA using GTX50188 LIM kinase 2 (phospho Thr505) antibody.



GTX50188 IHC-P Image

IHC-P analysis of human breast carcinoma tissue using GTX50188 LIM kinase 2 (phospho Thr505) antibody. Left : Primary antibody. Right : Primary antibody pre-incubated with the antigen specific peptide.



GTX50188 ICC/IF Image

ICC/IF analysis of methanol-fixed HeLa cells using GTX50188 LIM kinase 2 (phospho Thr505) antibody.



For full product information, images and publications, please visit our [website](https://www.genetex.com).