

# Rb (phospho Ser807) antibody

**Cat. No. GTX50192**

|                    |              |
|--------------------|--------------|
| <b>Host</b>        | Rabbit       |
| <b>Clonality</b>   | Polyclonal   |
| <b>Isotype</b>     | IgG          |
| <b>Application</b> | WB, IHC-P    |
| <b>Reactivity</b>  | Human, Mouse |

**Package**  
100 µl

## APPLICATION

### Application Note

\*Optimal dilutions/concentrations should be determined by the researcher.

| Suggested dilution | Recommended dilution |
|--------------------|----------------------|
| WB                 | 1:500-1:1000         |
| IHC-P              | 1:50-1:100           |

Not tested in other applications.

**Calculated MW** 106 kDa. ([Note](#))

## PROPERTIES

|                      |  |
|----------------------|--|
| <b>Form</b>          | Liquid   |
| <b>Buffer</b>        | PBS (without Mg <sup>2+</sup> and Ca <sup>2+</sup> ) pH7.4, 150mM NaCl, 50% Glycerol   |
| <b>Preservative</b>  | 0.02% Sodium azide   |
| <b>Storage</b>       | Store as concentrated solution. Centrifuge briefly prior to opening vial. For short-term storage (1-2 weeks), store at 4°C. For long-term storage, aliquot and store at -20°C or below. Avoid multiple freeze-thaw cycles. |
| <b>Concentration</b> | 1 mg/ml (Please refer to the vial label for the specific concentration.)   |
| <b>Immunogen</b>     | Peptide sequence around phosphorylation site of serine 807 (Y-I-S(p)-P-L) derived from human Rb.   |
| <b>Purification</b>  | Purified by antigen-affinity chromatography. Non-phospho specific antibodies were removed by chromatography using non-phosphopeptide.  |
| <b>Conjugation</b>   | Unconjugated   |

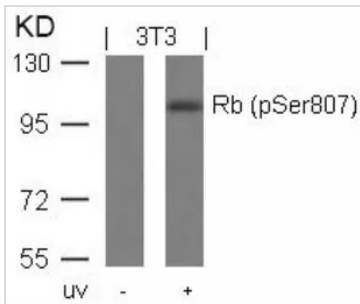
### Note

For laboratory research use only. Not for any clinical, therapeutic, or diagnostic use in humans or animals. Not for animal or human consumption.

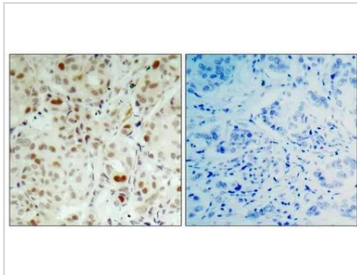
Purchasers shall not, and agree not to enable third parties to, analyze, copy, reverse engineer or otherwise attempt to determine the structure or sequence of the product.



For full product information, images and publications, please visit our [website](#).

**DATA IMAGES**

**GTX50192 WB Image**

WB analysis of extracts from 3T3 cells untreated or treated with UV using GTX50192 Rb (phospho Ser807) antibody.


**GTX50192 IHC-P Image**

IHC-P analysis of human breast carcinoma tissue using GTX50192 Rb (phospho Ser807) antibody.

Left : Primary antibody

Right : Primary antibody pre-incubated with the antigen specific peptide



For full product information, images and publications, please visit our [website](https://www.genetex.com).