

Cofilin 1 (phospho Ser3) antibody

Cat. No. GTX50199

| | |
|--------------|-------------------|
| Host | Rabbit |
| Clonality | Polyclonal |
| Isotype | IgG |
| Applications | WB, ICC/IF, IHC-P |
| Reactivity | Human, Mouse, Rat |

References (4)

Package

100 µl

Applications

Application Note

*Optimal dilutions/concentrations should be determined by the researcher.

| Suggested dilution | Recommended dilution |
|--------------------|----------------------|
| WB | 1:500-1:1000 |
| ICC/IF | 1:100-1:200 |
| IHC-P | 1:50-1:100 |

Not tested in other applications.

Calculated MW 19 kDa. ([Note](#))

Properties

| | |
|---------------|--|
| Form | Liquid |
| Buffer | PBS, 150mM NaCl, 50% Glycerol |
| Preservative | 0.02% Sodium azide |
| Storage | Store as concentrated solution. Centrifuge briefly prior to opening vial. For short-term storage (1-2 weeks), store at 4°C. For long-term storage, aliquot and store at -20°C or below. Avoid multiple freeze-thaw cycles. |
| Concentration | 1 mg/ml (Please refer to the vial label for the specific concentration.) |
| Immunogen | Peptide sequence around phosphorylation site of serine 3 (M-A-S(p)-G-V) derived from human Cofilin 1. |
| Purification | Purified by antigen-affinity chromatography. Non-phospho specific antibodies were removed by chromatography using non-phosphopeptide. |
| Conjugation | Unconjugated |

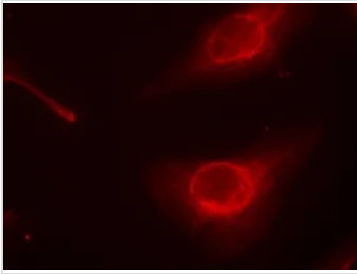
Note

For laboratory research use only. Not for any clinical, therapeutic, or diagnostic use in humans or animals. Not for animal or human consumption.

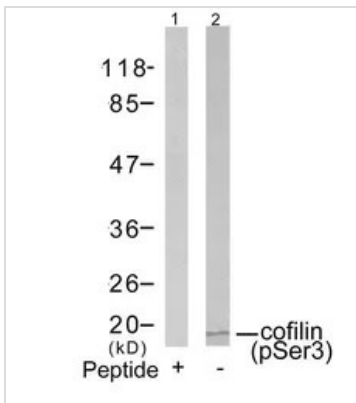
Purchasers shall not, and agree not to enable third parties to, analyze, copy, reverse engineer or otherwise attempt to determine the structure or sequence of the product.



For full product information, images and publications, please visit our [website](#).

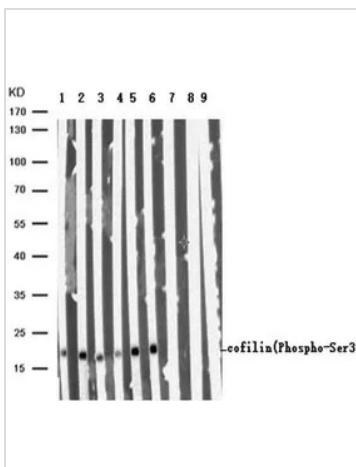
DATA IMAGES

GTx50199 ICC/IF Image

ICC/IF analysis of methanol-fixed HeLa cells using GTx50199 Cofilin 1 (phospho Ser3) antibody.


GTx50199 WB Image

WB analysis of extracts from COLO205 cells using GTx50199 Cofilin 1 (phospho Ser3) antibody.

Lane 1 : Primary antibody pre-incubated with the antigen specific peptide


GTx50199 WB Image

WB analysis of extracts from various sample using GTx50199 Cofilin 1 (phospho Ser3) antibody.

Lane 1 : HeLa treated with H₂O₂

Lane 2 : Mouse brain tissue

Lane 3 : Rat brain tissue

Lane 4 : N-peptide blocked HeLa treated with H₂O₂

Lane 5 : N-peptide blocked Mouse brain tissue

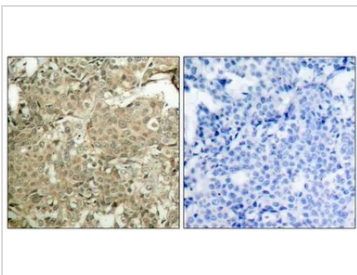
Lane 6 : N-peptide blocked Rat brain tissue

Lane 7 : P-peptide blocked HeLa treated with H₂O₂

Lane 8 : P-peptide blocked Mouse brain tissue

Lane 9 : P-peptide blocked Rat brain tissue

Loading : 40 µg per lane


GTx50199 IHC-P Image

IHC-P analysis of human breast carcinoma tissue using GTx50199 Cofilin 1 (phospho Ser3) antibody.

Left : Primary antibody

Right : Primary antibody pre-incubated with the antigen specific peptide



For full product information, images and publications, please visit our [website](http://www.genetex.com).