

alpha Synuclein (phospho Ser129) antibody

Cat. No. GTX50222

| | |
|---------------------|--------------------------------------|
| Host | Rabbit |
| Clonality | Polyclonal |
| Isotype | IgG |
| Applications | WB, ICC/IF, IHC, IHC (Free Floating) |
| Reactivity | Human, Mouse, Rat |

References (9)

Package

100 µl

Applications

Application Note

*Optimal dilutions/concentrations should be determined by the researcher.

| Suggested dilution | Recommended dilution |
|---------------------|----------------------|
| WB | 1:500-1:1000 |
| ICC/IF | Assay dependent |
| IHC | Assay dependent |
| IHC (Free Floating) | Assay dependent |

Not tested in other applications.

Calculated MW 14 kDa. ([Note](#))

Properties

| | |
|----------------------|--|
| Form | Liquid |
| Buffer | PBS, 150mM NaCl, 50% Glycerol |
| Preservative | 0.02% Sodium azide |
| Storage | Store as concentrated solution. Centrifuge briefly prior to opening vial. For short-term storage (1-2 weeks), store at 4°C. For long-term storage, aliquot and store at -20°C or below. Avoid multiple freeze-thaw cycles. |
| Concentration | 1 mg/ml (Please refer to the vial label for the specific concentration.) |
| Immunogen | Peptide sequence around phosphorylation site of serine 129 (M-P-S(p)-E-E) derived from human alpha Synuclein. |
| Purification | Purified by antigen-affinity chromatography. Non-phospho specific antibodies were removed by chromatography using non-phosphopeptide. |
| Conjugation | Unconjugated |



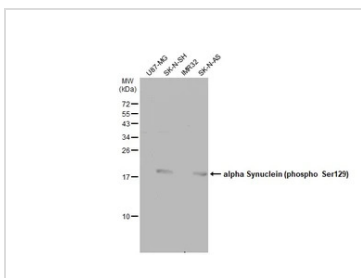
For full product information, images and publications, please visit our [website](#).

For laboratory research use only. Not for any clinical, therapeutic, or diagnostic use in humans or animals. Not for animal or human consumption.

Note

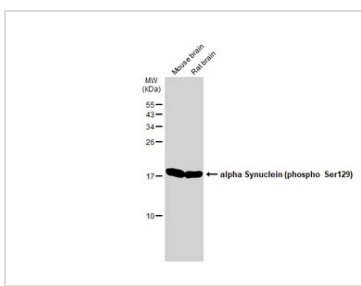
Purchasers shall not, and agree not to enable third parties to, analyze, copy, reverse engineer or otherwise attempt to determine the structure or sequence of the product.

DATA IMAGES



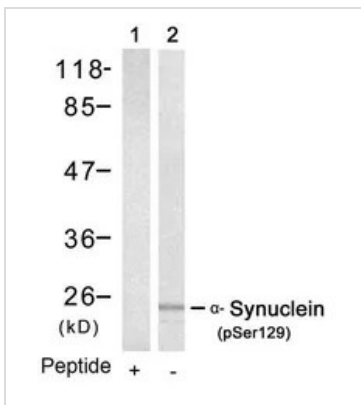
GTX50222 WB Image

Various whole cell extracts (30 µg) were separated by 15% SDS-PAGE, and the membrane was blotted with alpha Synuclein (phospho Ser129) antibody (GTX50222) diluted at 1:500. The HRP-conjugated anti-rabbit IgG antibody (GTX213110-01) was used to detect the primary antibody.



GTX50222 WB Image

Various tissue extracts (50 µg) were separated by 15% SDS-PAGE, and the membrane was blotted with alpha Synuclein (phospho Ser129) antibody (GTX50222) diluted at 1:500. The HRP-conjugated anti-rabbit IgG antibody (GTX213110-01) was used to detect the primary antibody.



GTX50222 WB Image

WB analysis of extracts from mouse brain tissue using GTX50222 alpha Synuclein (phospho Ser129) antibody.

Lane 1 : Primary antibody pre-incubated with the antigen specific peptide



For full product information, images and publications, please visit our [website](#).