

SEK1 / MKK4 (phospho Ser80) antibody

Cat. No. GTX50227

Host	Rabbit
Clonality	Polyclonal
Isotype	IgG
Applications	WB, ICC/IF, IHC-P
Reactivity	Human

Package
100 µl

Applications

Application Note

*Optimal dilutions/concentrations should be determined by the researcher.

Suggested dilution	Recommended dilution
WB	1:500-1:1000
ICC/IF	1:100-1:200
IHC-P	1:50-1:100

Not tested in other applications.

Calculated MW 44 kDa. ([Note](#))

Properties

Form	Liquid
Buffer	PBS, 150mM NaCl, 50% Glycerol
Preservative	0.02% Sodium azide
Storage	Store as concentrated solution. Centrifuge briefly prior to opening vial. For short-term storage (1-2 weeks), store at 4°C. For long-term storage, aliquot and store at -20°C or below. Avoid multiple freeze-thaw cycles.
Concentration	1 mg/ml (Please refer to the vial label for the specific concentration.)
Immunogen	Peptide sequence around phosphorylation site of serine 80 (T-H-S(p)-I-E) derived from human SEK1 / MKK4.
Purification	Purified by antigen-affinity chromatography. Non-phospho specific antibodies were removed by chromatography using non-phosphopeptide.
Conjugation	Unconjugated

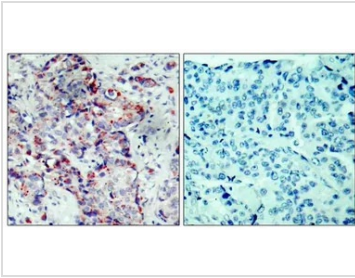
Note

For laboratory research use only. Not for any clinical, therapeutic, or diagnostic use in humans or animals. Not for animal or human consumption.

Purchasers shall not, and agree not to enable third parties to, analyze, copy, reverse engineer or otherwise attempt to determine the structure or sequence of the product.



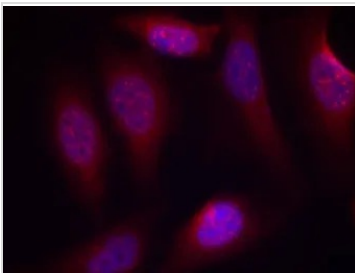
For full product information, images and publications, please visit our [website](#).

DATA IMAGES

GTX50227 IHC-P Image

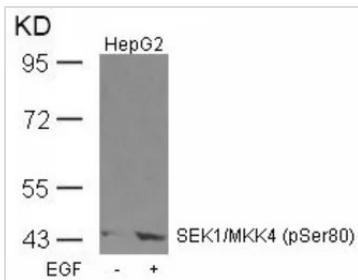
IHC-P analysis of human breast carcinoma tissue using GTX50227 SEK1 / MKK4 (phospho Ser80) antibody.

Left : Primary antibody

Right : Primary antibody pre-incubated with the antigen specific peptide


GTX50227 ICC/IF Image

ICC/IF analysis of methanol-fixed HeLa cells using GTX50227 SEK1 / MKK4 (phospho Ser80) antibody.


GTX50227 WB Image

WB analysis of extracts from HepG2 cells untreated or treated with EGF using GTX50227 SEK1 / MKK4 (phospho Ser80) antibody.



For full product information, images and publications, please visit our [website](https://www.genetex.com).