

HDAC2 (phospho Ser394) antibody

Cat. No. GTX50236

| | |
|---------------------|-------------------|
| Host | Rabbit |
| Clonality | Polyclonal |
| Isotype | IgG |
| Applications | WB, ICC/IF, IHC-P |
| Reactivity | Human, Mouse |

References (1)

 Review (1)

Package

100 µl

Applications

Application Note

*Optimal dilutions/concentrations should be determined by the researcher.

| Suggested dilution | Recommended dilution |
|--------------------|----------------------|
| WB | 1:500-1:1000 |
| ICC/IF | 1:100-1:200 |
| IHC-P | 1:50-1:100 |

Not tested in other applications.

Calculated MW 55 kDa. ([Note](#))

Properties

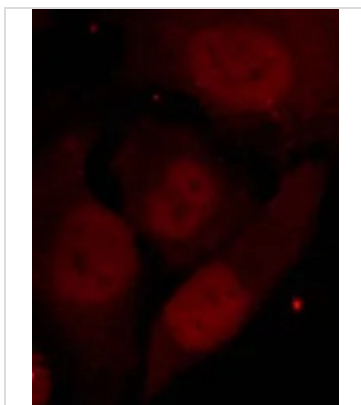
| | |
|----------------------|--|
| Form | Liquid |
| Buffer | PBS, 150mM NaCl, 50% Glycerol |
| Preservative | 0.02% Sodium azide |
| Storage | Store as concentrated solution. Centrifuge briefly prior to opening vial. For short-term storage (1-2 weeks), store at 4°C. For long-term storage, aliquot and store at -20°C or below. Avoid multiple freeze-thaw cycles. |
| Concentration | 1 mg/ml (Please refer to the vial label for the specific concentration.) |
| Immunogen | Peptide sequence around phosphorylation site of serine 394 (E-D-S(p)-G-D) derived from human HDAC2. |
| Purification | Purified by antigen-affinity chromatography. Non-phospho specific antibodies were removed by chromatography using non-phosphopeptide. |
| Conjugation | Unconjugated |
| Note | For laboratory research use only. Not for any clinical, therapeutic, or diagnostic use in humans or animals. Not for animal or human consumption. Purchasers shall not, and agree not to enable third parties to, analyze, copy, reverse engineer or otherwise attempt to determine the structure or sequence of the product. |



For full product information, images and publications, please visit our [website](#).

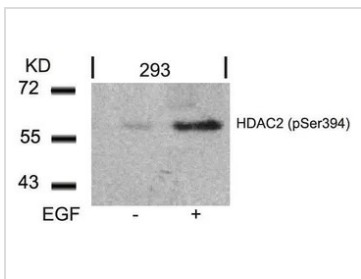
Date 2026 / 04 / 12 Page 1 of 2

DATA IMAGES



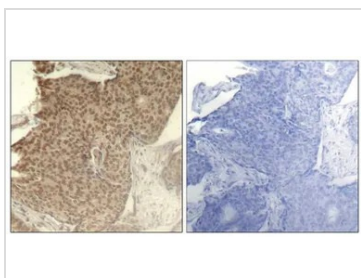
GTX50236 ICC/IF Image

ICC/IF analysis of methanol-fixed HeLa cells using GTX50236 HDAC2 (phospho Ser394) antibody.



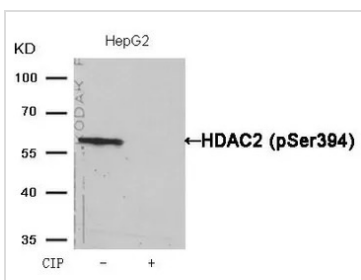
GTX50236 WB Image

WB analysis of extracts from 293 cells untreated or treated with EGF using GTX50236 HDAC2 (phospho Ser394) antibody.



GTX50236 IHC-P Image

IHC-P analysis of human breast carcinoma tissue using GTX50236 HDAC2 (phospho Ser394) antibody.
 Left : Primary antibody
 Right : Primary antibody pre-incubated with the antigen specific peptide



GTX50236 WB Image

WB analysis of extracts from HepG2 cells treated with calf intestinal phosphatase (CIP) using GTX50236 HDAC2 (phospho Ser394) antibody.



For full product information, images and publications, please visit our [website](#).