

Synaptotagmin 1 (phospho Thr202) + Synaptotagmin 2 (phospho Thr199) antibody

Cat. No. GTX50250

Host	Rabbit
Clonality	Polyclonal
Isotype	IgG
Applications	ICC/IF
Reactivity	Human

Package

100 µl

Applications

Application Note

*Optimal dilutions/concentrations should be determined by the researcher.

Suggested dilution	Recommended dilution
ICC/IF	1:100-1:200

Not tested in other applications.

Calculated MW 48 kDa. ([Note](#))

Product Note The sequence around Synaptotagmin 1 (phospho Thr202) is conserved with the sequence around Synaptotagmin 2 (phospho Thr199).

Properties

Form	Liquid
Buffer	PBS, 150mM NaCl, 50% Glycerol
Preservative	0.02% Sodium azide
Storage	Store as concentrated solution. Centrifuge briefly prior to opening vial. For short-term storage (1-2 weeks), store at 4°C. For long-term storage, aliquot and store at -20°C or below. Avoid multiple freeze-thaw cycles.
Concentration	1 mg/ml (Please refer to the vial label for the specific concentration.)
Immunogen	Peptide sequence around phosphorylation site of threonine 202/199 (R-K-T(p)-L-N) derived from human Synaptotagmin 2.
Purification	Purified by antigen-affinity chromatography. Non-phospho specific antibodies were removed by chromatography using non-phosphopeptide.
Conjugation	Unconjugated



For full product information, images and publications, please visit our [website](#).

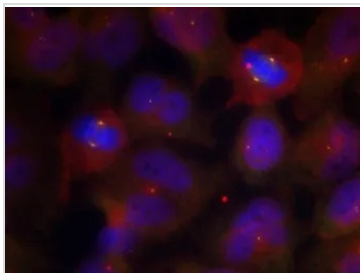
Date 2026 / 01 / 24 Page 1 of 2

Note

For laboratory research use only. Not for any clinical, therapeutic, or diagnostic use in humans or animals. Not for animal or human consumption.

Purchasers shall not, and agree not to enable third parties to, analyze, copy, reverse engineer or otherwise attempt to determine the structure or sequence of the product.

DATA IMAGES



GTX50250 ICC/IF Image

ICC/IF analysis of methanol-fixed HeLa cells using GTX50250 Synaptotagmin 1 (phospho Thr202) + Synaptotagmin 2 (phospho Thr199) antibody.



For full product information, images and publications, please visit our [website](#).