

mTOR (phospho Ser2448) antibody

Cat. No. GTX50258

Host	Rabbit
Clonality	Polyclonal
Isotype	IgG
Applications	WB, ICC/IF, IHC-P
Reactivity	Human, Rat

References (5)

Package

100 µl

Applications

Application Note

*Optimal dilutions/concentrations should be determined by the researcher.

Suggested dilution	Recommended dilution
WB	1:500-1:1000
ICC/IF	1:100-1:200
IHC-P	1:50-1:100

Not tested in other applications.

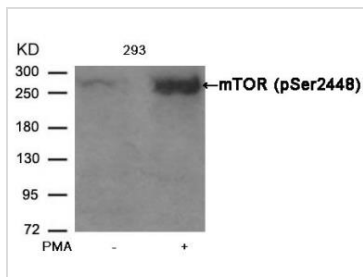
Calculated MW 289 kDa. ([Note](#))

Properties

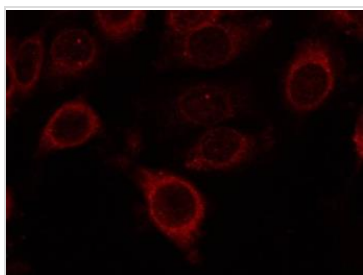
Form	Liquid
Buffer	PBS (without Mg ²⁺ and Ca ²⁺) pH 7.4, 150mM NaCl, 0.02% sodium azide, 50% glycerol
Storage	Store as concentrated solution. Centrifuge briefly prior to opening vial. For short-term storage (1-2 weeks), store at 4°C. For long-term storage, aliquot and store at -20°C or below. Avoid multiple freeze-thaw cycles.
Concentration	1 mg/ml (Please refer to the vial label for the specific concentration.)
Immunogen	Peptide sequence around phosphorylation site of serine 2448 (T-D-S(p)-Y-S) derived from human mTOR.
Purification	Purified by antigen-affinity chromatography. Non-phospho specific antibodies were removed by chromatography using non-phosphopeptide.
Conjugation	Unconjugated
Note	For laboratory research use only. Not for any clinical, therapeutic, or diagnostic use in humans or animals. Not for animal or human consumption. Purchasers shall not, and agree not to enable third parties to, analyze, copy, reverse engineer or otherwise attempt to determine the structure or sequence of the product.



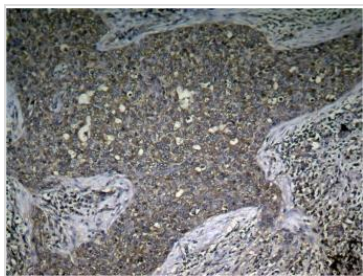
For full product information, images and publications, please visit our [website](#).

DATA IMAGES

GTX50258 WB Image

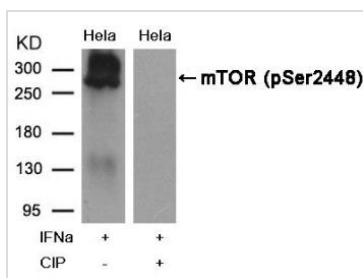
WB analysis of extracts from 293 cells untreated or treated with PMA using GTX50258 mTOR (phospho Ser2448) antibody.


GTX50258 ICC/IF Image

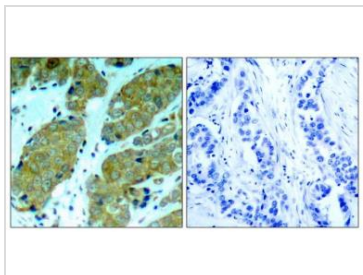
ICC/IF analysis of methanol-fixed MCF cells using GTX50258 mTOR (phospho Ser2448) antibody.


GTX50258 IHC-P Image

IHC-P analysis of human breast carcinoma tissue using GTX50258 mTOR (phospho Ser2448) antibody.


GTX50258 WB Image

WB analysis of extracts from HeLa cells treated with IFNa or calf intestinal phosphatase (CIP) using GTX50258 mTOR (phospho Ser2448) antibody.


GTX50258 IHC-P Image

IHC-P analysis of human breast carcinoma tissue using GTX50258 mTOR (phospho Ser2448) antibody.

Left : Primary antibody

Right : Primary antibody pre-incubated with the antigen specific peptide



For full product information, images and publications, please visit our [website](https://www.genetex.com).