

# CDC2 (phospho Tyr15) antibody

**Cat. No. GTX50273**

<b>Host</b>	Rabbit
<b>Clonality</b>	Polyclonal
<b>Isotype</b>	IgG
<b>Applications</b>	WB
<b>Reactivity</b>	Human

**Package**  
100 µl

## Applications

### Application Note

\*Optimal dilutions/concentrations should be determined by the researcher.

Suggested dilution	Recommended dilution
WB	1:500-1:1000

Not tested in other applications.

**Calculated MW** 34 kDa. ( [Note](#) )

## Properties

<b>Form</b>	Liquid
<b>Buffer</b>	PBS, 150mM NaCl, 50% Glycerol
<b>Preservative</b>	0.02% Sodium azide
<b>Storage</b>	Store as concentrated solution. Centrifuge briefly prior to opening vial. For short-term storage (1-2 weeks), store at 4°C. For long-term storage, aliquot and store at -20°C or below. Avoid multiple freeze-thaw cycles.
<b>Concentration</b>	1 mg/ml (Please refer to the vial label for the specific concentration.)
<b>Immunogen</b>	Peptide sequence around phosphorylation site of tyrosine 15 (G-T-Y(p)-G-V) derived from human CDC2.
<b>Purification</b>	Purified by antigen-affinity chromatography. Non-phospho specific antibodies were removed by chromatography using non-phosphopeptide.
<b>Conjugation</b>	Unconjugated

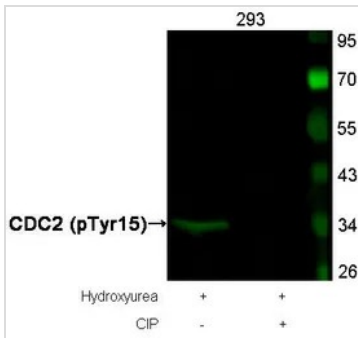
### Note

For laboratory research use only. Not for any clinical, therapeutic, or diagnostic use in humans or animals. Not for animal or human consumption.

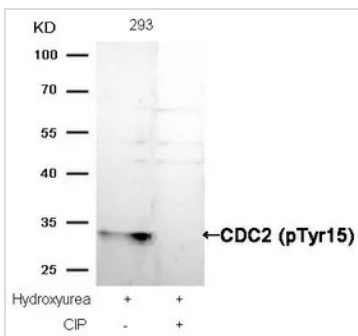
Purchasers shall not, and agree not to enable third parties to, analyze, copy, reverse engineer or otherwise attempt to determine the structure or sequence of the product.



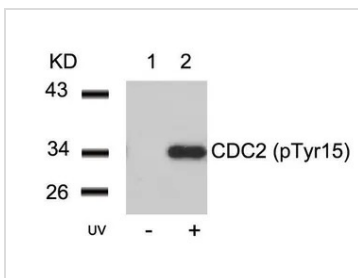
For full product information, images and publications, please visit our [website](#).

**DATA IMAGES**

**GTX50273 WB Image**

WB analysis of extracts from 293 cells treated with Hydroxyurea or calf intestinal phosphatase (CIP) using GTX50273 CDC2 (phospho Tyr15) antibody.


**GTX50273 WB Image**

WB analysis of extracts from 293 cells treated with Hydroxyurea or calf intestinal phosphatase (CIP) using GTX50273 CDC2 (phospho Tyr15) antibody.


**GTX50273 WB Image**

WB analysis of extracts from HeLa cells untreated (lane 1) or treated with UV (lane 2) using GTX50273 CDC2 (phospho Tyr15) antibody.



For full product information, images and publications, please visit our [website](https://www.genetex.com).