

# JNK (phospho Thr183) antibody

**Cat. No. GTX50278**

<b>Host</b>	Rabbit
<b>Clonality</b>	Polyclonal
<b>Isotype</b>	IgG
<b>Applications</b>	WB, IHC-P
<b>Reactivity</b>	Human

**Package**  
100 µl

## Applications

### Application Note

\*Optimal dilutions/concentrations should be determined by the researcher.

Suggested dilution	Recommended dilution
WB	1:500-1:1000
IHC-P	1:50-1:100

Not tested in other applications.

### Product Note

This antibody is raised against JNK1/2 phosphorylated at Thr183. Based on sequence homology, it is predicted to react with JNK3 when phosphorylated at the corresponding residues - Thr221.

## Properties

<b>Form</b>	Liquid
<b>Buffer</b>	PBS, 150mM NaCl, 50% Glycerol
<b>Preservative</b>	0.02% Sodium azide
<b>Storage</b>	Store as concentrated solution. Centrifuge briefly prior to opening vial. For short-term storage (1-2 weeks), store at 4°C. For long-term storage, aliquot and store at -20°C or below. Avoid multiple freeze-thaw cycles.
<b>Concentration</b>	1 mg/ml (Please refer to the vial label for the specific concentration.)
<b>Immunogen</b>	Peptide sequence around phosphorylation site of threonine 183 (M-M-T(p)-P-Y) derived from human JNK.
<b>Purification</b>	Purified by antigen-affinity chromatography. Non-phospho specific antibodies were removed by chromatography using non-phosphopeptide.
<b>Conjugation</b>	Unconjugated

### Note

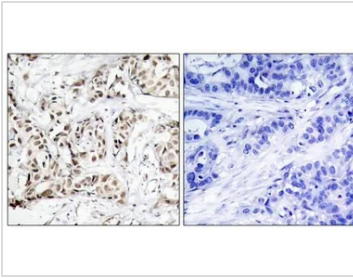
For laboratory research use only. Not for any clinical, therapeutic, or diagnostic use in humans or animals. Not for animal or human consumption.

Purchasers shall not, and agree not to enable third parties to, analyze, copy, reverse engineer or otherwise attempt to determine the structure or sequence of the product.



For full product information, images and publications, please visit our [website](#).

## DATA IMAGES

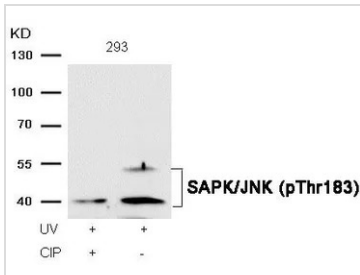


### GTX50278 IHC-P Image

IHC-P analysis of human breast carcinoma tissue using GTX50278 JNK (phospho Thr183) antibody.

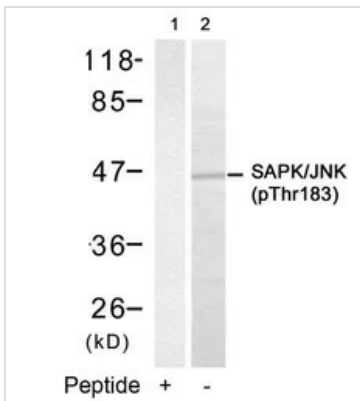
Left : Primary antibody

Right : Primary antibody pre-incubated with the antigen specific peptide



### GTX50278 WB Image

WB analysis of extracts from 293 cells treated with UV or calf intestinal phosphatase (CIP) using GTX50278 JNK (phospho Thr183) antibody.



### GTX50278 WB Image

WB analysis of extracts from 293 cells using GTX50278 JNK (phospho Thr183) antibody.

Lane 1 : Primary antibody pre-incubated with the antigen specific peptide



For full product information, images and publications, please visit our [website](https://www.genetex.com).