

# MARCKS (phospho Ser156) antibody

**Cat. No. GTX50290**

|                     |            |
|---------------------|------------|
| <b>Host</b>         | Rabbit     |
| <b>Clonality</b>    | Polyclonal |
| <b>Isotype</b>      | IgG        |
| <b>Applications</b> | WB, ICC/IF |
| <b>Reactivity</b>   | Human      |

**Package**  
100 µl

## Applications

### Application Note

\*Optimal dilutions/concentrations should be determined by the researcher.

| Suggested dilution | Recommended dilution |
|--------------------|----------------------|
| WB                 | 1:500-1:1000         |
| ICC/IF             | 1:100-1:200          |

Not tested in other applications.

**Calculated MW** 32 kDa. ( [Note](#) )

**Product Note** This antibody is raised against phopsho peptide of human MARCKS Ser162, which shares 100% identity identity with rat MARCKS around Ser156.

## Properties

|                      |  |
|----------------------|--|
| <b>Form</b>          | Liquid   |
| <b>Buffer</b>        | PBS, 150mM NaCl, 50% Glycerol  |
| <b>Preservative</b>  | 0.02% Sodium azide   |
| <b>Storage</b>       | Store as concentrated solution. Centrifuge briefly prior to opening vial. For short-term storage (1-2 weeks), store at 4°C. For long-term storage, aliquot and store at -20°C or below. Avoid multiple freeze-thaw cycles. |
| <b>Concentration</b> | 1 mg/ml (Please refer to the vial label for the specific concentration.)   |
| <b>Immunogen</b>     | Peptide sequence around phosphorylation site of serine 162 (K-K-S(p)-F-K) derived from human MARCKS.   |
| <b>Purification</b>  | Purified by antigen-affinity chromatography. Non-phospho specific antibodies were removed by chromatogramphy using non-phosphopeptide.   |
| <b>Conjugation</b>   | Unconjugated   |



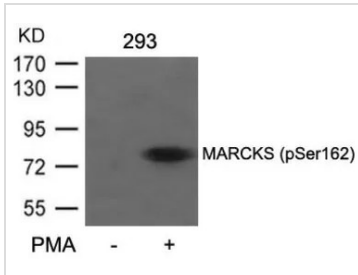
For full product information, images and publications, please visit our [website](#).

For laboratory research use only. Not for any clinical, therapeutic, or diagnostic use in humans or animals. Not for animal or human consumption.

## Note

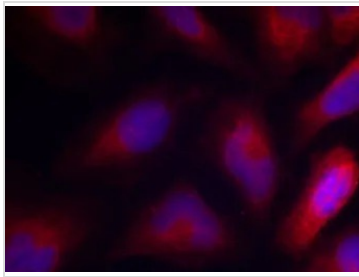
Purchasers shall not, and agree not to enable third parties to, analyze, copy, reverse engineer or otherwise attempt to determine the structure or sequence of the product.

## DATA IMAGES



### GTX50290 WB Image

WB analysis of extracts from 293 cells untreated or treated with PMA using GTX50290 MARCKS (phospho Ser156) antibody.



### GTX50290 ICC/IF Image

ICC/IF analysis of methanol-fixed HeLa cells using GTX50290 MARCKS (phospho Ser156) antibody.



For full product information, images and publications, please visit our [website](#).