

PKC theta (phospho Ser676) antibody

Cat. No. GTX50315

Host	Rabbit
Clonality	Polyclonal
Isotype	IgG
Applications	WB, ICC/IF, IHC-P
Reactivity	Human, Rat

Package
100 µl

Applications

Application Note

*Optimal dilutions/concentrations should be determined by the researcher.

Suggested dilution	Recommended dilution
WB	1:500-1:1000
ICC/IF	1:100-1:200
IHC-P	1:50-1:100

Not tested in other applications.

Calculated MW 82 kDa. ([Note](#))

Properties

Form	Liquid
Buffer	PBS, 150mM NaCl, 50% Glycerol
Preservative	0.02% Sodium azide
Storage	Store as concentrated solution. Centrifuge briefly prior to opening vial. For short-term storage (1-2 weeks), store at 4°C. For long-term storage, aliquot and store at -20°C or below. Avoid multiple freeze-thaw cycles.
Concentration	1 mg/ml (Please refer to the vial label for the specific concentration.)
Immunogen	Peptide sequence around phosphorylation site of serine 676 (R-L-S(p)-F-A) derived from human PKC theta.
Purification	Purified by antigen-affinity chromatography. Non-phospho specific antibodies were removed by chromatography using non-phosphopeptide.
Conjugation	Unconjugated

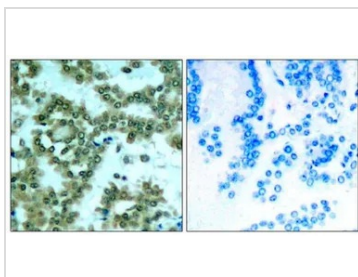
Note

For laboratory research use only. Not for any clinical, therapeutic, or diagnostic use in humans or animals. Not for animal or human consumption.

Purchasers shall not, and agree not to enable third parties to, analyze, copy, reverse engineer or otherwise attempt to determine the structure or sequence of the product.



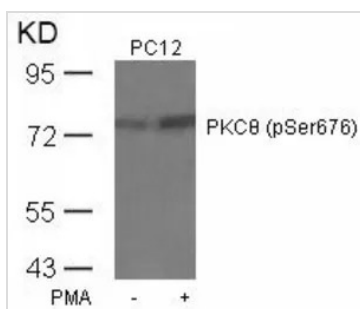
For full product information, images and publications, please visit our [website](#).

DATA IMAGES

GTX50315 IHC-P Image

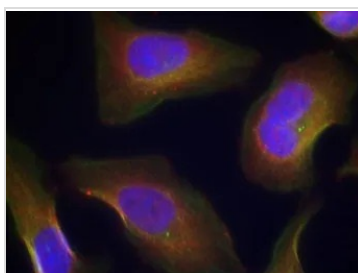
IHC-P analysis of human lung carcinoma tissue using GTX50315 PKC theta (phospho Ser676) antibody.

Left : Primary antibody

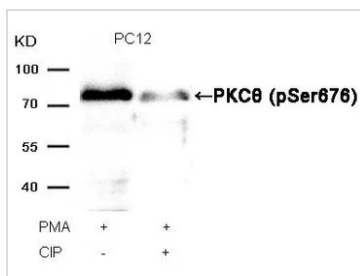
Right : Primary antibody pre-incubated with the antigen specific peptide


GTX50315 WB Image

WB analysis of extracts from PC12 cells untreated or treated with PMA using GTX50315 PKC theta (phospho Ser676) antibody.


GTX50315 ICC/IF Image

ICC/IF analysis of methanol-fixed HeLa cells using GTX50315 PKC theta (phospho Ser676) antibody.


GTX50315 WB Image

WB analysis of extracts from PC12 cells treated with PMA or calf intestinal phosphatase (CIP) using GTX50315 PKC theta (phospho Ser676) antibody.



For full product information, images and publications, please visit our [website](https://www.genetex.com).