

## GSK3 alpha (phospho Tyr279) + GSK3 beta (phospho Tyr216) antibody

**Cat. No. GTX50316**

<b>Host</b>	Rabbit
<b>Clonality</b>	Polyclonal
<b>Isotype</b>	IgG
<b>Applications</b>	WB, ICC/IF, IHC-P
<b>Reactivity</b>	Human, Mouse

**Package**  
100 µl

## Applications

**Application Note**

\*Optimal dilutions/concentrations should be determined by the researcher.

Suggested dilution	Recommended dilution
WB	1:500-1:1000
ICC/IF	1:100-1:200
IHC-P	1:50-1:100

Not tested in other applications.

## Properties

<b>Form</b>	Liquid
<b>Buffer</b>	PBS, 150mM NaCl, 50% Glycerol
<b>Preservative</b>	0.02% Sodium azide
<b>Storage</b>	Store as concentrated solution. Centrifuge briefly prior to opening vial. For short-term storage (1-2 weeks), store at 4°C. For long-term storage, aliquot and store at -20°C or below. Avoid multiple freeze-thaw cycles.
<b>Concentration</b>	1 mg/ml (Please refer to the vial label for the specific concentration.)
<b>Immunogen</b>	Peptide sequence around phosphorylation site of tyrosine 279/216 (V-S-Y(p)-I-C) derived from human GSK3 alpha/GSK3 beta.
<b>Purification</b>	Purified by antigen-affinity chromatography. Non-phospho specific antibodies were removed by chromatography using non-phosphopeptide.
<b>Conjugation</b>	Unconjugated

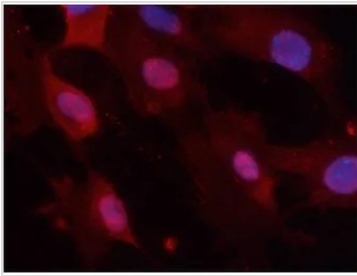
**Note**

For laboratory research use only. Not for any clinical, therapeutic, or diagnostic use in humans or animals. Not for animal or human consumption.

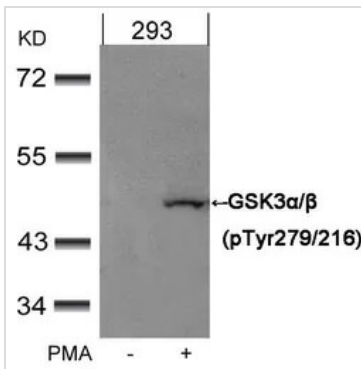
Purchasers shall not, and agree not to enable third parties to, analyze, copy, reverse engineer or otherwise attempt to determine the structure or sequence of the product.



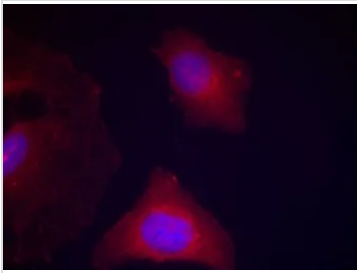
For full product information, images and publications, please visit our [website](#).

**DATA IMAGES**

**GTX50316 ICC/IF Image**

ICC/IF analysis of methanol-fixed MEF cells using GTX50316 GSK3 alpha (phospho Tyr279) + GSK3 beta (phospho Tyr216) antibody.


**GTX50316 WB Image**

WB analysis of extracts from 293 cells untreated or treated with PMA using GTX50316 GSK3 alpha (phospho Tyr279) + GSK3 beta (phospho Tyr216) antibody.


**GTX50316 ICC/IF Image**

ICC/IF analysis of methanol-fixed HeLa cells using GTX50316 GSK3 alpha (phospho Tyr279) + GSK3 beta (phospho Tyr216) antibody.


**GTX50316 WB Image**

WB analysis of extracts from various cell lines using GTX50316 GSK3 alpha (phospho Tyr279) + GSK3 beta (phospho Tyr216) antibody.



For full product information, images and publications, please visit our [website](https://www.genetex.com).